

Middlesbrough South and East Cleveland Parliamentary Constituency

This is the first bulletin of 2013 produced by Northern Housing Consortium (NHC) providing analysis of housing-related data for the Parliamentary Constituencies in the North of England. The report provides analysis of housing supply and the economy and welfare reforms in the constituency.

We have used the following symbols to indicate your performance against the relevant regional or national statistics.



Above average



Reference point



Below average

Housing Supply and the Economy



In the final quarter of 2012, there were 50 new dwelling starts in Redcar & Cleveland and 30 in Middlesbrough. Of these, only ten starts in Middlesbrough were by housing associations. Compared to the corresponding quarter of 2011, dwelling starts have remained at a similar level in Redcar & Cleveland but grown from 20 in Middlesbrough.



Research by Northern Housing Consortium and Sheffield Hallam University into the contribution housing makes to the [economy in the north](#) shows that between local authorities, ALMOs and registered housing providers, £10.3bn worth of output expenditure was made in the North in 2011/12, supported 116,000 jobs and 8,400 new homes were built in the previous year.



Recently released figures show that there are a total of 3,446 unemployed in the constituency (5.7% of the working aged population). This represents a 1.1% reduction on the same point in 2012. Some 7.9% of working-aged males and 3.5% of their female counterparts were claiming unemployment benefits in March 2013 and while male figures fell by 3.7% on the previous year, figures for females grew by 4.9% in the same period.



ONS data shows a higher proportion of smaller households with almost two-thirds of households (65.9%) having either one or two people living in them. Three-person households make up 16.1% of households. Figure 1 below shows the proportions of all households in the constituency and how this compares with regional figures.

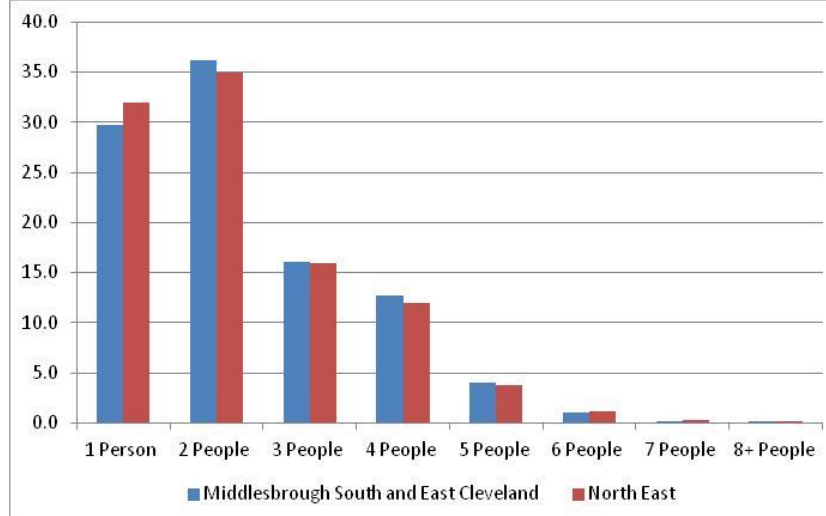


Figure 1: People per household

Welfare



The 2011 Census reports that 30,654 households (76.7%) now under-occupy their home in the constituency. A study by Sheffield Hallam University reported in the [Financial Times](#) shows that 3,100 households in Middlesbrough and 2,400 in Redcar & Cleveland will be affected by the 'bedroom tax' with an estimated £2.1m and £1.6m loss per year respectively.



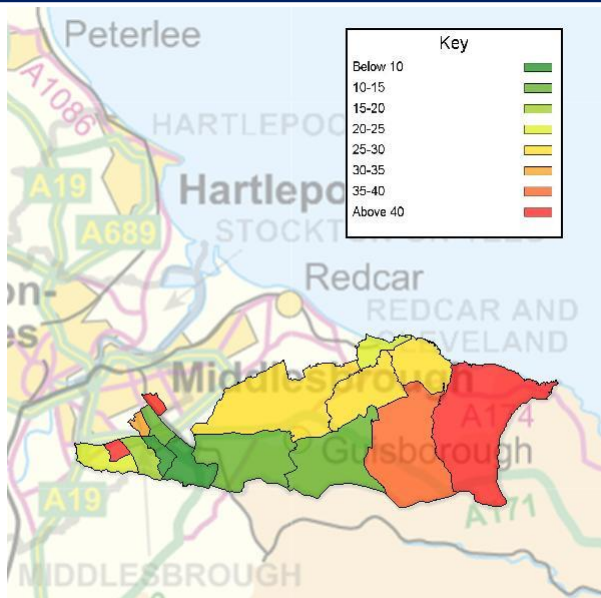
In last year's first edition of the constituency profiles we reported that 8,600 households receiving Housing Benefit in the constituency. In November 2012, there were 8,940 such claimants. This is 22.4% of all households in the constituency and a 3.9% increase on the 8,600 reported last year.



Annual Survey of Hours and Earnings (ASHE) for 2012 shows that in Middlesbrough South and East Cleveland constituency, the median weekly pay is £338.50. This represents a decrease of 1.2% on the previous year. While full-time pay has increased by 4.1%, part-time pay has grown by 8%.



Furthermore, Campaign to End Child Poverty 2012 data shows that in Middlesbrough South and East Cleveland, 5,736 children live in poverty – 28% of the child population in the constituency. Map 1 shows child poverty by ward and that the worst affected ward is Park End (56%).



Map 1: Child Poverty by Ward

If you have any queries regarding the content of the APPG briefings, please contact:
Barry Turnbull, Policy Services Officer, 0191 5661030 or barry.turnbull@northern-consortium.org.uk