

Hemsworth Parliamentary Constituency

This is the first bulletin of 2013 produced by Northern Housing Consortium (NHC) providing analysis of housing-related data for the Parliamentary Constituencies in the North of England. The report provides analysis of housing supply and the economy and welfare reforms in the constituency.

We have used the following symbols to indicate your performance against the relevant regional or national statistics.



Above average



Reference point



Below average

Housing Supply and the Economy



In the final quarter of 2012, there were 160 new dwelling starts and 260 dwelling completions in Wakefield LA area. Fifty starts (31.3%) and 30 completions (18.8%) were in the social sector. Dwelling starts have fallen from 260 on the previous quarter but increased from 100 in corresponding quarter in 2011.



Research by Northern Housing Consortium and Sheffield Hallam University into the contribution housing makes to the [economy in the north](#) shows that £10.3bn worth of output expenditure was made in the North in 2011/12. It is estimated that Wakefield District Homes supported £297.783 million worth of expenditure and supported 3,484 FTE jobs in Yorkshire and Humberside.



Recently released figures show that there are a total of 2,849 unemployed in the constituency (4.7% of the working aged population). This represents a 2.4% increase on the same point in 2012. Some 6.3% of working-aged males and 3.1% of their female counterparts were claiming unemployment benefits in March 2013 and while male figures increased by 0.4% on the previous year, females figures grew by 6.8%.



ONS data shows a higher proportion of smaller households with over two-thirds of households (65%) having either one or two people living in them. Three-person households make up 16.9% of households. Figure 1 below shows the proportions of all households in the constituency and how this compares with regional figures.

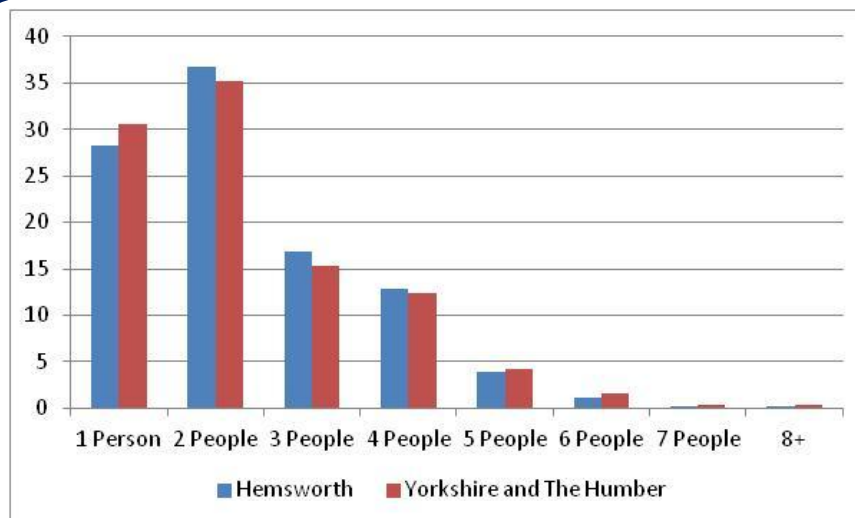


Figure 1: People per household

Welfare



The 2011 Census reports that 30,900 households (77%) now under-occupy their home in the constituency. A study by Sheffield Hallam University reported in the [Financial Times](#) shows that 6,300 households in Wakefield LA area will be affected by the 'bedroom tax' with an estimated £4.2m loss per year.



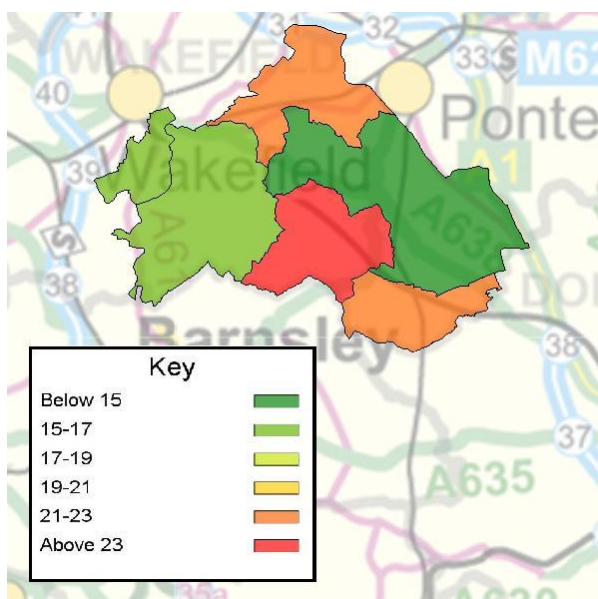
In last year's first edition of the constituency profiles we reported that 8,480 households receiving Housing Benefit in the constituency. In November 2012, there were 9,092 such claimants. This is 22.7% of all households in the constituency and a 7.2% increase on the 8,480 reported last year.



Annual Survey of Hours and Earnings (ASHE) for 2012 shows that in Hemsworth, the median weekly pay is £341.20. This represents an increase of 6% on the previous year. While full-time pay has decreased by 5.6% over the past twelve months, part-time pay has risen by 10%.



Notwithstanding this overall increase, Campaign to End Child Poverty 2012 data shows that in Hemsworth, 3,957 children live in poverty – 19% of the child population in the constituency. Map 1 shows child poverty by ward and that the worst affected ward is Hemsworth (25%).



Map 1: Child Poverty by Ward

If you have any queries regarding the content of the APPG briefings, please contact:
Barry Turnbull, Policy Services Officer, 0191 5661030 or barry.turnbull@northern-consortium.org.uk