

Leeds North West Parliamentary Constituency

This is the first bulletin of 2013 produced by Northern Housing Consortium (NHC) providing analysis of housing-related data for the Parliamentary Constituencies in the North of England. The report provides analysis of housing supply and the economy and welfare reforms in the constituency.

We have used the following symbols to indicate your performance against the relevant regional or national statistics.



Above average



Reference point



Below average

Housing Supply and the Economy



In the final quarter of 2012, there were 290 new dwelling starts and 260 dwelling completions in Leeds LA area. All but 30 starts were in the private sector. Dwelling starts have fallen from 380 on the previous quarter but increased from 160 in corresponding quarter in 2011.



Research by Northern Housing Consortium and Sheffield Hallam University into the contribution housing makes to the [economy in the north](#) shows that £10.3bn worth of output expenditure was made in the North in 2011/12. It is estimated that Leeds Federated supported £27.328 million worth of expenditure and supported 333 FTE jobs in Yorkshire and Humberside.



Recently released figures show that there are a total of 1,667 unemployed in the constituency (2.5% of the working aged population). This represents a 6.1% decrease on the same point in 2012. Some 3.3% of working-aged males and 1.6% of their female counterparts were claiming unemployment benefits in March 2013 and while male figures decreased by 9.9% on the previous year, females figures grew by 3.8%.



ONS data shows a higher proportion of smaller households with over two-thirds of households (65.1%) having either one or two people living in them. Three-person households make up 13.9% of households. Figure 1 below shows the proportions of all households in the constituency and how this compares with regional figures.

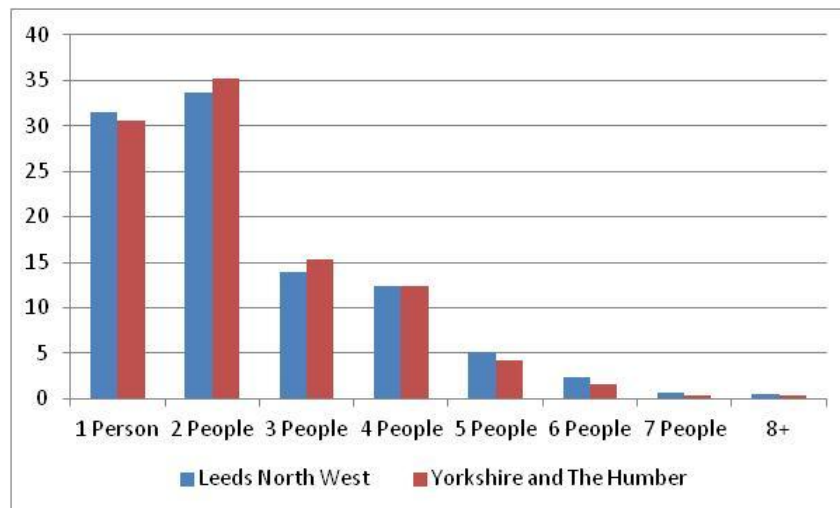


Figure 1: People per household

Welfare



The 2011 Census reports that 24,050 households (71.3%) now under-occupy their home in the constituency. A study by Sheffield Hallam University reported in the [Financial Times](#) shows that 13,500 households in Leeds LA area will be affected by the 'bedroom tax' with an estimated £9.1m loss per year.



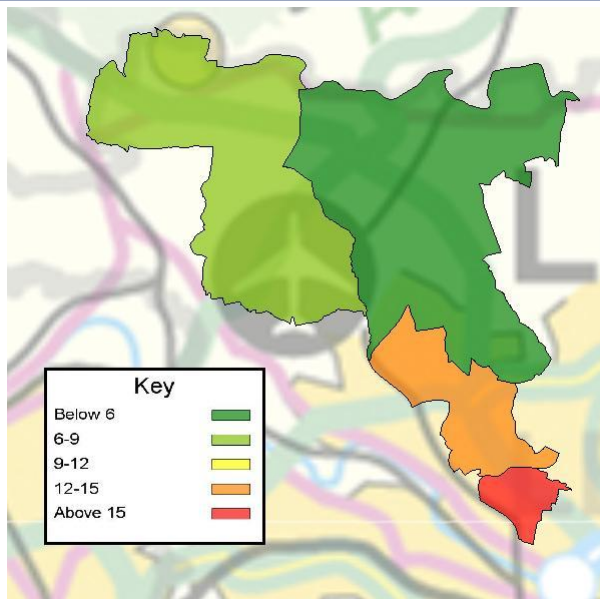
In last year's first edition of the constituency profiles we reported that 4,760 households receiving Housing Benefit in the constituency. In November 2012, there were 4,918 such claimants. This is 14.6% of all households in the constituency and a 3.3% increase on the 4,760 reported last year.



Annual Survey of Hours and Earnings (ASHE) for 2012 shows that in Leeds North West, the median weekly pay is £385.90. This represents a decrease of 7.2% on the previous year. Full-time pay has increased by 1.4% over the past twelve months whilst part-time pay has grown by 2.4%.



Furthermore, Campaign to End Child Poverty 2012 data shows that in Leeds North West, 1,296 children live in poverty – 10% of the child population in the constituency. Map 1 shows child poverty by ward and that the worst affected ward is Headingley (16%).



Map 1: Child Poverty by Ward

If you have any queries regarding the content of the APPG briefings, please contact:
Barry Turnbull, Policy Services Officer, 0191 5661030 or barry.turnbull@northern-consortium.org.uk