

## Barnsley Central Parliamentary Constituency

This is the second bulletin of 2013 produced by Northern Housing Consortium (NHC) providing analysis of housing-related data for the Parliamentary Constituencies in the North of England. The report provides analysis of the impacts of welfare reform and the housing market in the constituency.

We have used the following symbols to indicate your performance against the relevant regional or national statistics.



Above average



Reference point



Below average

### Welfare Reform



[Real Life Reform](#) report is the result of a partnership between Northern Housing Consortium, seven registered providers and York University. Some findings emerging from the first report are that 65% of households have less than £10 per week to live on following rent and essentials such as food and bills. 83% of households are in debt (average £2,418). Households are reporting increased levels of stress and depression.



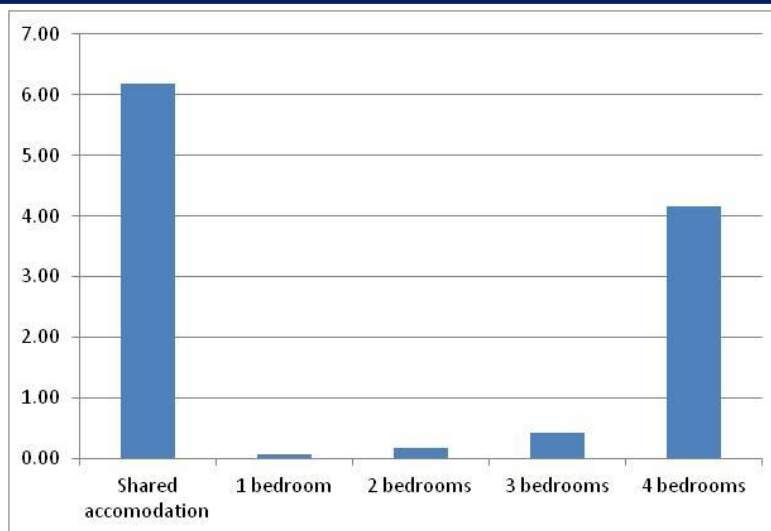
The Trussell Trust's latest figures show that more people are being referred to foodbanks with Benefit related problems since April's welfare reforms. Between April and June, over 150,000 people received three days' emergency food from a Trussell Trust foodbank - 200% more than the same period in 2012. The nearest foodbank to the constituency is in the Methodist Church, Blacker Hill.



The number of Housing Benefit claimants in the social sector has grown in the constituency since the implementation of the under-occupation penalty. Such claims grew by 0.34% between March and May this year. However, claims of Local Housing Allowance in the private sector also grew by 1.1% in the same period compared with 2.1% in South Yorkshire. The average weekly LHA award also grew by 0.2% to £64.68.



While claimants in one and two bedroom properties grew only slightly, those in shared accommodation increased by 5.3% in the constituency while claimants living in four bedroom properties grew by 4.9%. Overall, weekly LHA cost has risen by 1.3% (£1,984.87) (multiplying no. of claimants by average weekly award).



**Figure 1:** Change in weekly LHA costs

## Housing Market



Ministry of Justice data shows that in the Barnsley LA area, social landlord possession claims in the first two quarters of 2013 stood at 327. This compares to 261 claims in the corresponding timeframe in 2012 – a 25.3% increase. Landlord possessions rose by 44.4% to 39 over this time. In the private sector (rented and mortgage), while claims fell by 19.5%, possessions fell by 9.3%.



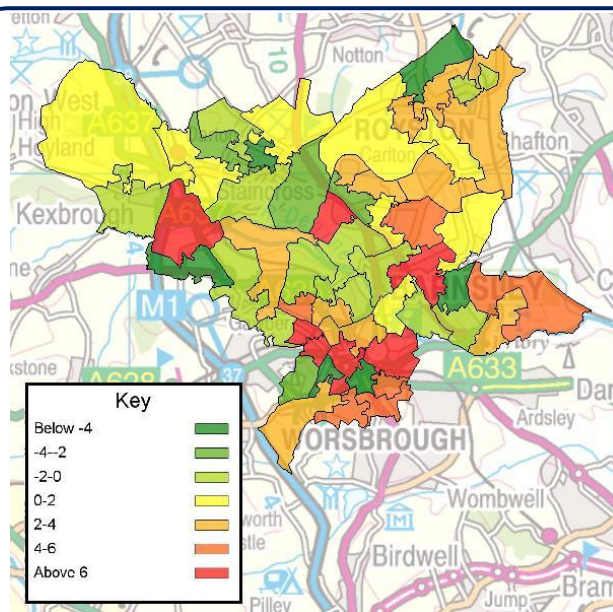
According to ONS figures, the population in the constituency grew by 1.6% from 83,321 in 2010 to 84,621 in 2011. The map below shows the population change by lower super output area and that greatest population increases have taken place in LSOAs covered by the Central ward and parts of Darton West ward have seen greatest decreases (note: data is not available for some LSOAs in 2011).



Notwithstanding this overall population increase, CORE data shows that social housing lettings have fallen in Barnsley LA from 2,477 in 2011/12 to 2,041 in 2012/13 – a fall of 17.6%. This compares to an overall fall of 5.4% in South Yorkshire.



In the year ending in March 2013, there were 1,037 decisions made by the planning authority in Barnsley LA. Some 146 of these (14.1%) were regarding developments for housing. This represents 19.4% of all housing-related decisions in South Yorkshire.



**Map 1: Percentage change in population**

If you have any queries regarding the content of the APPG briefings, please contact:  
Barry Turnbull, Policy Services Officer, 0191 5661030 or [barry.turnbull@northern-consortium.org.uk](mailto:barry.turnbull@northern-consortium.org.uk)