

Halifax Parliamentary Constituency

This is the second bulletin of 2013 produced by Northern Housing Consortium (NHC) providing analysis of housing-related data for the Parliamentary Constituencies in the North of England. The report provides analysis of the impacts of welfare reform and the housing market in the constituency.

We have used the following symbols to indicate your performance against the relevant regional or national statistics.



Above average



Reference point



Below average

Welfare Reform



[Real Life Reform](#) report is the result of a partnership between Northern Housing Consortium, seven registered providers and York University. Some findings emerging from the first report are that 65% of households have less than £10 per week to live on following rent and essentials such as food and bills. 83% of households are in debt (average £2,418). Households are reporting increased levels of stress and depression.



The Trussell Trust's latest figures show that more people are being referred to foodbanks with Benefit related problems since April's welfare reforms. Between April and June, over 150,000 people received three days' emergency food from a Trussell Trust foodbank - 200% more than the same period in 2012. The nearest foodbank to the constituency is in Bradford.



The number of Housing Benefit claimants in the social sector has fallen in the constituency since the implementation of the under-occupation penalty. Such claims fell by 1.1% between March and May this year. Meanwhile, claims of Local Housing Allowance in the private sector fell by 0.2% in the same period compared with a West Yorkshire average increase of 0.8%.



While the average Housing Benefit award grew by 0.9%, the average weekly LHA award fell by 0.05% and by multiplying the number of claimants by average weekly award an overall weekly LHA cost decrease of 0.3% can be estimated. Figure 1 shows how average costs have changed over this period by dwelling size.

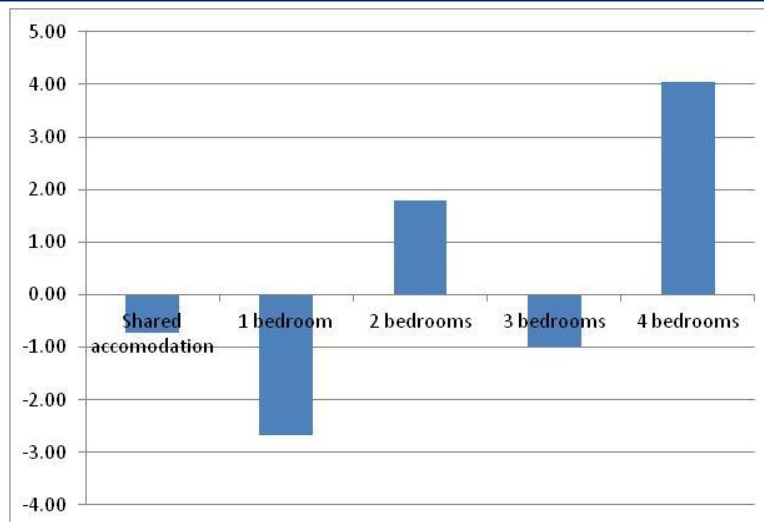


Figure 1: Change in weekly LHA costs

Housing Market



Ministry of Justice data shows that in the Calderdale LA area, social landlord possession claims in the first two quarters of 2013 stood at 160. This compares to 178 claims in the corresponding timeframe in 2012 – an 11.3% increase. Landlord possessions stood at 49 compared to 46 in the corresponding timeframes. In the private sector (rented and mortgage), while claims grew by 4.6%, possessions grew by 23.7%.



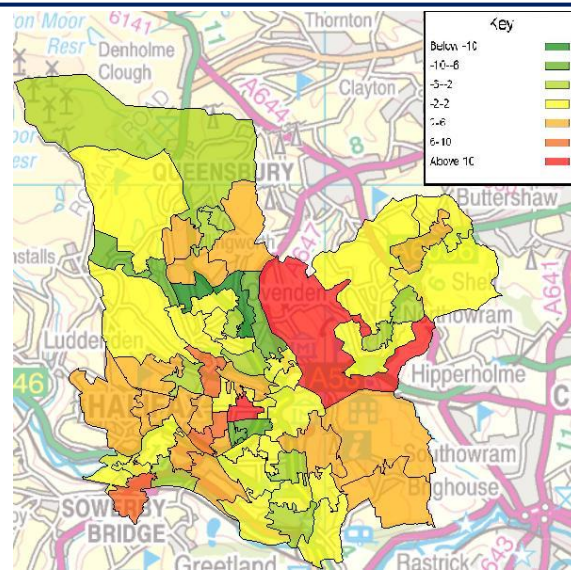
According to ONS figures, the population in the constituency grew by 0.1% from 100,543 in 2010 to 100,619 in 2011. The map below shows the population change by lower super output area and that the greatest population increase has taken place in the LSOA covered by the Northowram and Shelf ward (10.9%) and parts of Ovenden ward have seen greatest decrease (-14.3%) (note: data is not available for some LSOAs in 2011).



CORE data shows that social housing lettings have fallen in the Calderdale LA area from 1,991 in 2011/12 to 1,814 in 2012/13 – a decrease of 8.9%. This compares to an overall increase of 4.2% in West Yorkshire.



In the year ending in March 2013, there were 1,447 decisions made by the planning authority in Calderdale LA area. Some 214 of these (14.8%) were regarding developments for housing. This represents 13% of all housing-related decisions in West Yorkshire.



Map 1: Percentage change in population

If you have any queries regarding the content of the APPG briefings, please contact:
Barry Turnbull, Policy Services Officer, 0191 5661030 or barry.turnbull@northern-consortium.org.uk