

Oldham East and Saddleworth Parliamentary Constituency

This is the first bulletin of 2014 produced by Northern Housing Consortium (NHC) providing analysis of housing-related data for the Parliamentary Constituencies in the North of England. The report provides analysis of the impacts of welfare reform and the housing market in the constituency.

We have used the following symbols to indicate your performance against the relevant regional or national statistics.



Above average



Reference point



Below average

Welfare Reform



The third [Real Life Reform](#) report found an increase in the average debt of respondents taking part in the study (£3,503) with debt repayments increasing by 58% since October. 46% of participants report having nothing left each week to live on once rent and essentials such as food and bills have been paid.



Last year we reported that in Oldham East and Saddleworth, 6,455 children live in poverty – 26% of the child population in the constituency. According to figures by The Children's Society, 5,178 children in poverty are estimated to miss out on the [warm home discount](#) in the constituency.



A number of sources report that households affected by the spare room subsidy cannot move due to a lack of suitable accommodation. In the first three quarters of 2013/14, there were 425 general needs lettings in Oldham (CORE data). This compares to 1,308 lettings in the same period of 2012/13 (a 67.5% decrease). Lettings of one-bedroom properties fell by 82.6% (Q3 2013/14 compared to Q3 2012/13).



Data released by the Department of Communities and Local Government in October shows that a total of £498,663 was allocated to Oldham Council in Discretionary Housing Payment funding. Of that, £121,862 has been committed (24.4%). The greatest outlay (£58,818) was allocated to support 333 households affected by Local Housing Allowance reforms, although 547 households were affected by the removal of the spare room subsidy.

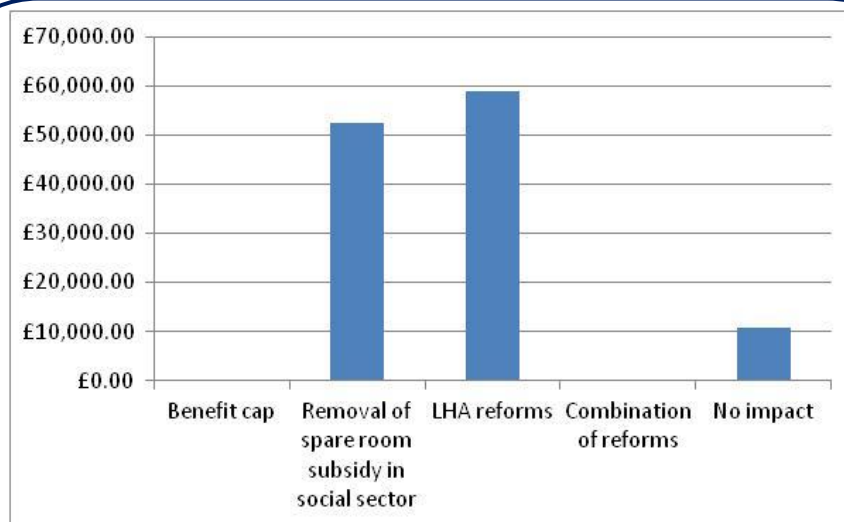


Figure 1: Summary of DHP Awards

Housing Market



The Chancellor announced in his Budget Statement that the Help to Buy Equity Loan scheme will be extended until March 2020. Since its launch on 1st April 2013 to the end of February 2014, a total of 44 homes were bought in Oldham with support of the scheme. This represents 6.2% of the 707 completed equity loans in Greater Manchester.



Average house prices in Oldham in February 2014 stood at £84,204 an increase of 10.7% on the same period in 2013. Alongside this, sales volumes have been on an upward trend, ending on 173 in December 2013 compared with 124 in December 2012.



Vacant dwellings have been on a general downward trend since 2008. In October 2013 there were a total of 3,836 vacant dwellings in Oldham compared with 5,283 in 2008. Of the 2013 figure, 255 were owned by housing associations. Long-term vacants have fallen by 48.3% since 2008.



In 2012/13, Oldham Council made a total of 96 homeless decisions. Of these, 63 applicants were accepted as being homeless and in priority need (65.6%). The number accepted as being homeless equates to 0.69 per 1,000 households in the borough – down from 0.74 in 2011/12 and a similar level as in 2010/11.

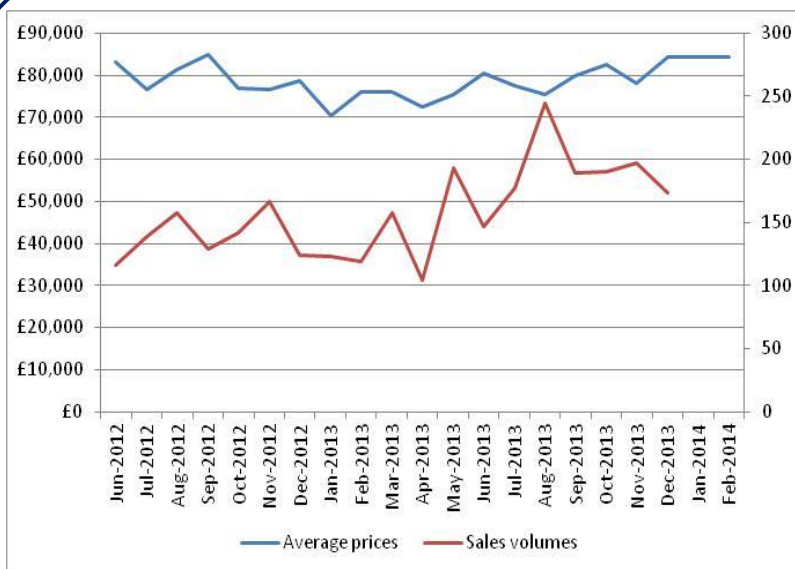


Figure 2: Change in house prices and sales volumes

If you have any queries regarding the content of the APPG briefings, please contact:
Barry Turnbull, Policy Services Officer, 0191 5661030 or barry.turnbull@northern-consortium.org.uk