

Stockton North Parliamentary Constituency

This is the first bulletin of 2015 produced by Northern Housing Consortium (NHC) providing analysis of housing-related data for the Parliamentary Constituencies in the North of England. The report provides analysis of the impacts of welfare reform and the housing market in the constituency.

We have used the following symbols to indicate your performance against the relevant regional or national statistics.



Above average



Reference point



Below average

Financial Distress



Census data shows that in Stockton North, 67.4% of working aged people were working full-time and 32.6% worked part-time. The corresponding figures for the region are 70% and 30%.



The Annual Survey of Salaries and Hours (ASHE) shows that in the constituency (as a place of work), 20.4% of all employee jobs paid below the Living Wage in 2014 (£7.65ph), a decrease from 22.3% in 2013. This compares to 23.4% regionally and 21.7% nationally.

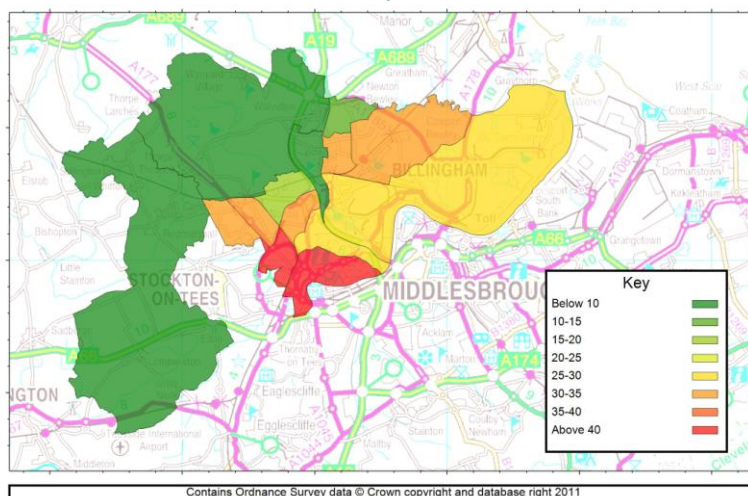


In the constituency, between September 2013 and September 2014, total Benefit sanctions fell by 60.5%. Employment and Support Allowance sanctions grew from none to 15 in this period. Meanwhile, Job Seekers Allowance sanctions fell from 309 to 122 (-60.5%).



In a previous edition of the Constituency Profiles, we reported that in Stockton North, 32% of children live in poverty. One year on, we can report that figure, before housing costs, stands at 18.6%. However, when housing costs are taken into account, 29.5% of children live in poverty (End Child Poverty) and the map below shows that Stockton Town Centre (44.1%) is the worst affected ward.

Child Poverty Oct-Dec 2013



If you have any queries regarding the content of the APPG briefings, please contact:
Barry Turnbull, Policy Services Officer, 0191 5661030 or barry.turnbull@northern-consortium.org.uk

Stockton North Parliamentary Constituency

Housing Market



After a general downward trend between Q1 2013 to Q2 2014, social landlord possession claims fell further by 31.7% between Q2 2014 and Q4 2014 in Stockton LA (from 63 to 43). Over the same period, actual possessions grew by 6.7% to 16. Meanwhile, mortgage claims and possessions fell over the same period.



In the final quarter of 2014, Stockton Council made 10 homelessness decisions and accepted no households as being homeless and in priority need. At the end of 2014, 26 households were housed in temporary accommodation, a 4% increase on the quarter ending in June.



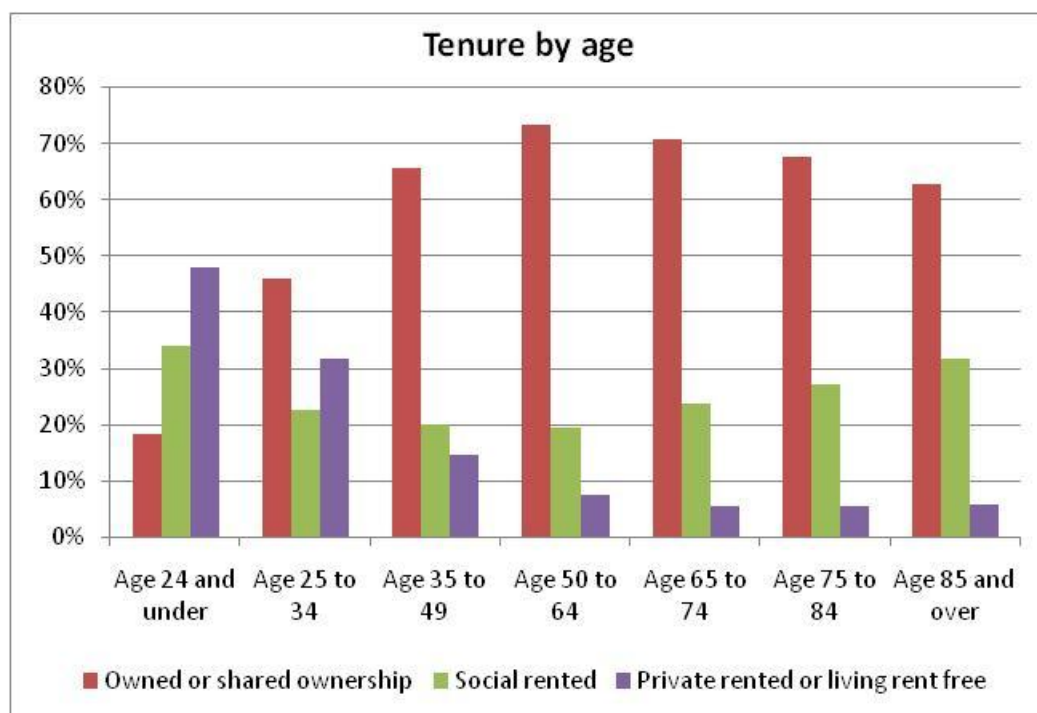
Some have pointed to a lack of new affordable homes being built as a reason behind the increase in homelessness. The latest annual figures show that in Stockton LA, while the number of new homes started has increased and completed homes have fallen (2012/13 to 2013/14), the proportion of dwellings starts and completions in the social sector has fallen for both.



Looking at quarterly building statistics, in the final quarter of 2014, there were 130 dwellings started and 150 completed in Stockton LA. There were no social sector starts or completions in this quarter. In the corresponding quarter of 2013, no dwellings started but 6.7% of completions were in the social sector.



Nomis data (2011) shows that in the constituency, 64% are owner-occupiers, 22% rent from a social landlord and 14% are private renters. However, looking at tenure by the age of the household reference person shows changes by age. There is a steep increase in owner-occupation between the ages of 24 and under (18%) and 50 to 64 year age bracket (73%) before falling to 63% for those aged 85 and over. Conversely, renting is more popular for those aged 24 and below (82%) before falling and then increasing slightly in later years.



If you have any queries regarding the content of the APPG briefings, please contact:
Barry Turnbull, Policy Services Officer, 0191 5661030 or barry.turnbull@northern-consortium.org.uk