

# Fylde Parliamentary Constituency

This is the first bulletin of 2015 produced by Northern Housing Consortium (NHC) providing analysis of housing-related data for the Parliamentary Constituencies in the North of England. The report provides analysis of the impacts of welfare reform and the housing market in the constituency.

We have used the following symbols to indicate your performance against the relevant regional or national statistics.



Above average



Reference point



Below average

## Financial Distress



Census data shows that in Fylde, 71.0% of working aged people were working full-time and 29.9% worked part-time. The corresponding figures for the region are 70.3% and 29.7%.



The Annual Survey of Salaries and Hours (ASHE) shows that in the constituency (as a place of work), 17.6% of all employee jobs paid below the Living Wage in 2014 (£7.65ph), a decrease from 19.6% in 2013. This compares to 23.6% regionally and 21.7% nationally.

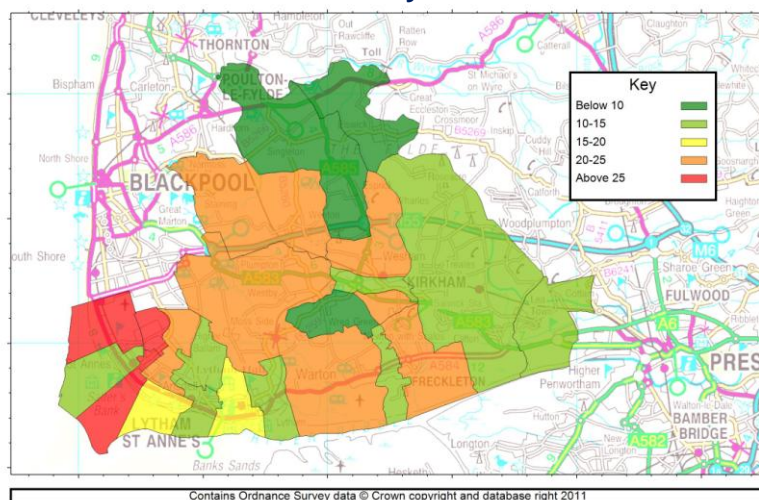


In the constituency, between September 2013 and September 2014, total Benefit sanctions fell by 46.2%. Employment and Support Allowance sanctions fell from 6 to none in the same period. Meanwhile, Job Seekers Allowance sanctions fell from 72 to 42 (-41.7%).



In a previous edition of the Constituency Profiles, we reported that in Fylde, 12% of children live in poverty. One year on, we can report that figure, before housing costs, stands at 11.6%. However, when housing costs are taken into account, 18.6% of children live in poverty (End Child Poverty) and the map below shows that Kilnhouse (31.7%) is the worst affected ward.

### Child Poverty Oct-Dec 2013



If you have any queries regarding the content of the APPG briefings, please contact:  
Barry Turnbull, Policy Services Officer, 0191 5661030 or [barry.turnbull@northern-consortium.org.uk](mailto:barry.turnbull@northern-consortium.org.uk)

## Housing Market



After being on a general upward trend between Q1 2013 to Q2 2014, social landlord possession claims grew further by 33.3% between Q2 2014 and Q4 2014 in Fylde LA (15 to 20). Meanwhile, mortgage claims have increased and possessions have fallen over the same period.



In the final quarter of 2014, Fylde Council made 9 homelessness decisions and accepted no households as being homeless and in priority need. At the end of 2014, there were 6 households housed in temporary accommodation, a similar picture as in the quarter ending in June.



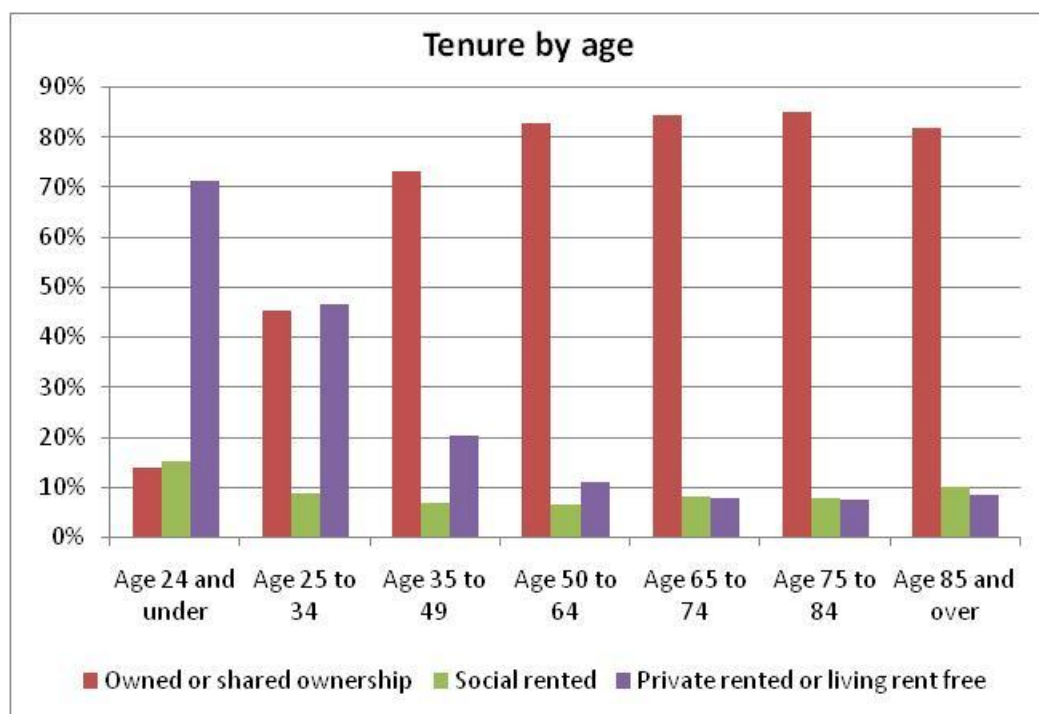
Some have pointed to a lack of new affordable homes being built as the reason behind the increase in homelessness in some areas. The latest annual figures show that in Fylde LA, the number of new starts have fallen but completed homes have risen (2012/13 to 2013/14), and that 22.2% of started dwellings and 15% of completions were in the social sector.



Looking at quarterly building statistics, in the final quarter of 2014, there were 50 dwellings started and 40 completed in Fylde LA. No dwellings started or completed were in the social sector, a similar picture as in the corresponding quarter of 2013.



Nomis data (2011) shows that in the constituency, 75% are owner-occupiers, 7% rent from a social landlord and 18% are private renters. However, looking at tenure by the age of the household reference person shows changes by age. There is a steep increase in owner-occupation between the ages of 24 and under (14%) and 70 to 84 year age bracket (85%) before falling to 82% for those aged 85 and over. Conversely, renting is more popular for those aged 24 and below (86%) before falling and then increasing slightly in later years.



If you have any queries regarding the content of the APPG briefings, please contact:  
Barry Turnbull, Policy Services Officer, 0191 5661030 or [barry.turnbull@northern-consortium.org.uk](mailto:barry.turnbull@northern-consortium.org.uk)