

## Bury South Parliamentary Constituency

This is the second bulletin of 2015 produced by Northern Housing Consortium (NHC) providing analysis of housing-related data for the Parliamentary Constituencies in the North of England. The report provides analysis of the impacts of welfare reform and the housing market in the constituency.

We have used the following symbols to indicate your performance against the relevant regional or national statistics.



Above average



Reference point



Below average

### Financial Distress



ONS figures show that in the year ending in June 2015, there were 47,000 people aged over 16 years old in employment (68.1%) in Bury South. There are 34,000 jobs in the constituency which equates to 0.55 jobs per 16-64 year old compared to 0.77 across the North West.



Experimental Jobseekers Allowance and out of work Universal Credit statistics produced by Jobcentre Plus shows that there were 1,455 such claimants in November 2015 (2.4% of 16-64 year olds), which is 0.2% increase the previous year. This compares to 2.4% of people in the region (a 0.1% increase).



The latest Government data shows that there were 23,910 children in low income families in the constituency in August 2013 (16.8% of all children). Almost four-fifths were in families in receipt of Income Support or Jobseekers Allowance while 16.8%, in families in receipt of Council Tax Credit and with less than 60% of median income.



Radcliffe West ward (25.1%) had the greatest concentration of such children followed by Besses (24.4%). St Mary's has a higher than average proportion of children living in a family in receipt of Income Support or JSA (83.3%).

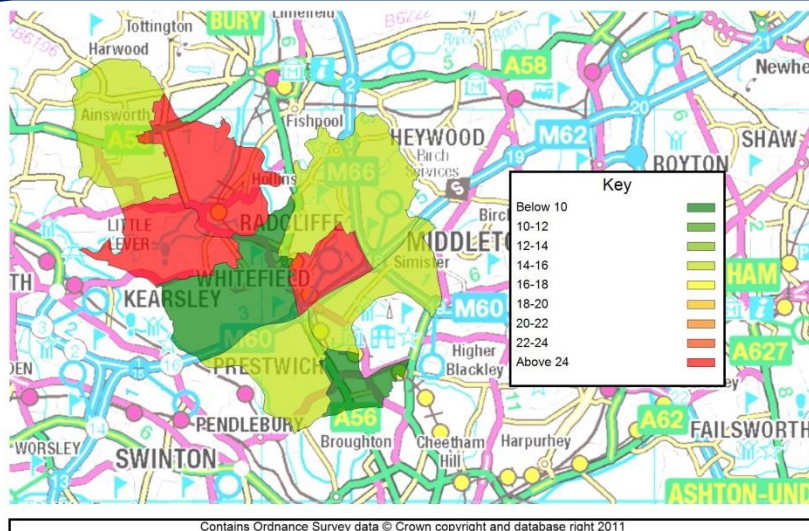


Figure 1: Percentage of children in low income families

## Housing Market



In 2014/15, there were 167 homeless acceptances by Bury Council. This is a 72.2% increase on the 97 acceptances in 2009/10. Of these, 8 households were found temporary accommodation and there were 21 households that were not found accommodation at the end of March 2015 despite a duty being owed.



In October 2014, the total number of vacant homes was 2,639. This is an 11.8% fall from 2,991 in 2009 compared with the 37.5% fall in Greater Manchester. Long-term vacants fell by 35.6% over the same period. There was a total of 229 social vacants and 8 were classed as long-term vacant (3.5%) which is a fall from 12 in the previous year.



As at April 2014, there were 1,166 households on the housing waiting list in Bury. This is a 59% decrease on the previous year of 2,844. Furthermore, this figure represented a large fall on previous years and the long-term trend is a 63.3% decrease on 2009 figures.



There are clear signs of a recovery in housing market with year-on-year increases in sales between 2009 and 2014 (72.5%) with greatest increase in sales of terraced properties (ONS). The data also shows house prices at their highest level since 2008 (£136,000).



As figure 2 shows, median house prices and pay have not grown at the same rate. Median gross pay increased in 2013 (ASHE) while median house prices remained static. As a result, the affordability ratio fell to 5.7 from 6.0 between 2012 and 2013.

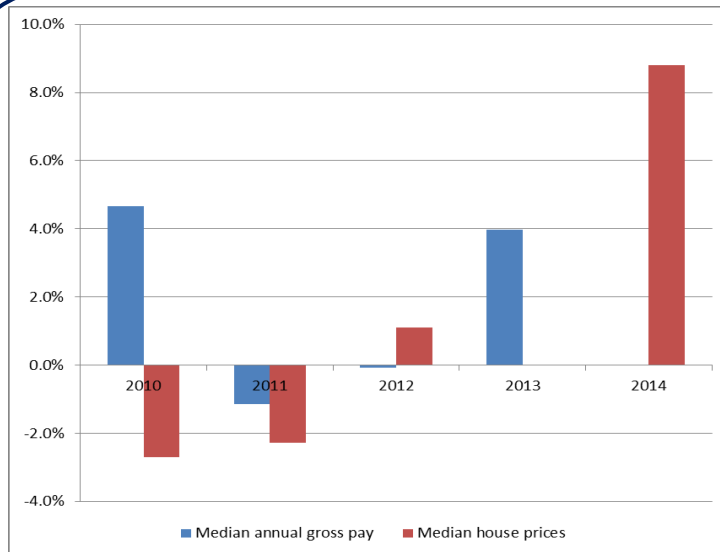


Figure 2: % change in house prices and pay

If you have any queries regarding the content of the APPG briefings, please contact:  
Barry Turnbull, Policy Services Officer, 0191 5661030 or [barry.turnbull@northern-consortium.org.uk](mailto:barry.turnbull@northern-consortium.org.uk)