

Knowsley Parliamentary Constituency

This is the second bulletin of 2015 produced by Northern Housing Consortium (NHC) providing analysis of housing-related data for the Parliamentary Constituencies in the North of England. The report provides analysis of the impacts of welfare reform and the housing market in the constituency.

We have used the following symbols to indicate your performance against the relevant regional or national statistics.



Above average



Reference point



Below average

Financial Distress



ONS figures show that in the year ending in June 2015, there were 45,000 people aged over 16 years old in employment (67.4%) in Knowsley. There are 43,000 jobs in the constituency which equates to 0.65 jobs per 16-64 year old compared to 0.77 across the North West.



Experimental Jobseekers Allowance and out of work Universal Credit statistics produced by Jobcentre Plus shows that there were 2,545 such claimants in November 2015 (3.8% of 16-64 year olds), which is a 0.3% increase on the previous year. This compares to 2.4% of people in the region (a 0.1% increase).



The latest Government data shows that there were 25,425 children in low income families in the constituency in August 2013 (31.4% of all children). Over four-fifths were in families in receipt of Income Support or Jobseekers Allowance while 7.7%, in families in receipt of Council Tax Credit and with less than 60% of median income.



Northwood ward (47.2%) had the greatest concentration of such children followed by Page Moss (45.2%). Whitefield has a higher than average proportion of children living in a family in receipt of Income Support or JSA (93%).

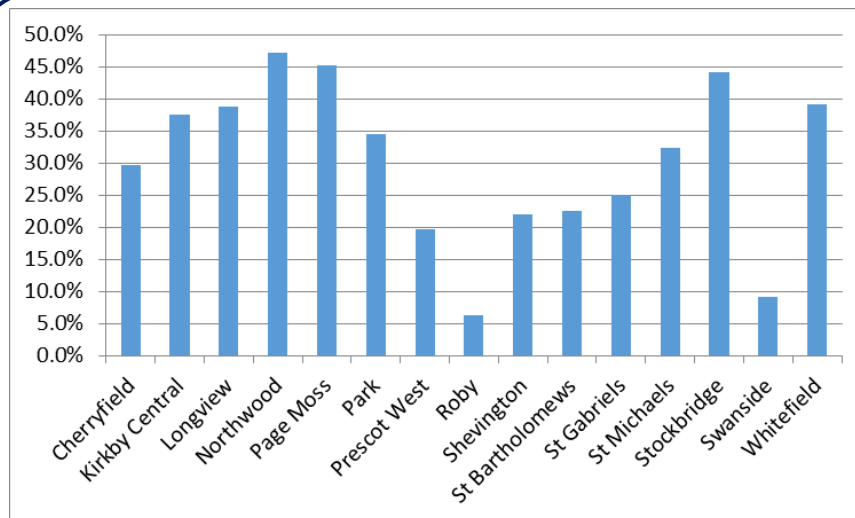


Figure 1: Percentage of children in low income families

Housing Market



In 2014/15, there were 62 homeless acceptances by Knowsley Council which is a 71.4% fall on the 217 acceptances in 2009/10. A total of 14 households were found temporary accommodation and there were no households that were not found accommodation at the end of March 2015 despite a duty being owed.



In October 2014, the total number of vacant homes was 2,252. This is a 13.9% decrease from 2,618 in 2009 compared with the 20.8% decrease in Merseyside. Long-term vacants fell by 44% over the same period. There was a total of 458 social vacants and 78 were classed as long-term vacant (17%).



As at April 2014, there were 3,383 households on the housing waiting list in Knowsley. This is a 6.8% decrease on the previous year 2,000. However, this figure represented a large growth on previous years and the long-term trend is a 52.5% increase on 2009 figures.



There are clear signs of a recovery in housing market with year-on-year increases in sales between 2009 and 2014 (68%) with greatest increase in sales of detached properties (ONS). The data also shows house prices at their highest level since 2008 (£108,000).



As figure 2 shows, median house prices and pay have not grown at the same rate. Median house prices grew while median gross pay fell in 2014. As a result, the affordability ratio grew to 5.6 from 5.1 between 2013 and 2014.

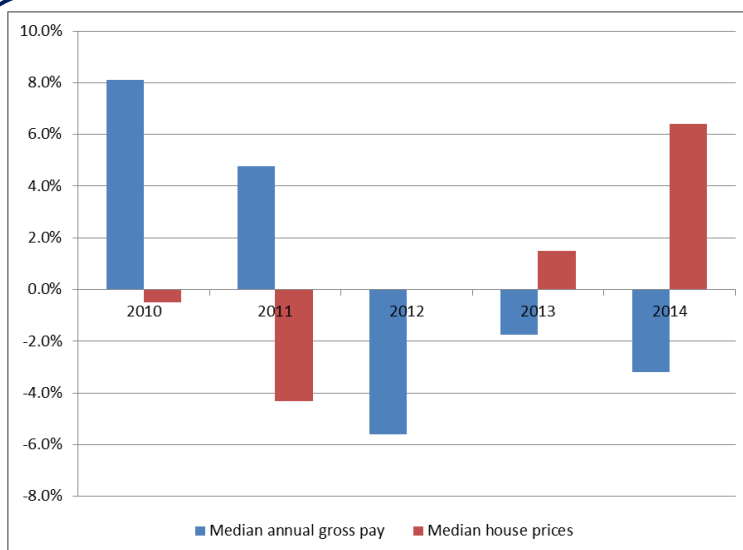


Figure 2: % change in house prices and pay

If you have any queries regarding the content of the APPG briefings, please contact:
Barry Turnbull, Policy Services Officer, 0191 5661030 or barry.turnbull@northern-consortium.org.uk