

North West Durham Parliamentary Constituency

This is the first bulletin of 2016 produced by Northern Housing Consortium (NHC) providing analysis of housing-related data for the Parliamentary Constituencies in the North of England. The report provides analysis of the impacts of welfare reform and the housing market in the constituency.

We have used the following symbols to indicate your performance against the relevant regional or national statistics.



Above average



Reference point



Below average

Economic Activity



Neighbourhood Statistics shows that there are 68,240 residents in North West Durham aged between 16 and 74. Of these, 67.5% are economically active (this includes unemployed and actively looking for work) which compares to 64.4% in County Durham and 66.2% for the region as a whole.



The latest economically active figures are an increase on those from the 2001 Census. In 2001, there were 62.7% of residents aged 16 to 74 classed as economically active. This coincides with an increase in the number of people aged 16 to 74.



Figure 1 below shows economically active are concentrated in Consett North (70.5%) and Delves Lane and Consett South (70.2%) wards having highest proportions of economically active 16 to 74 year olds.



Of the economically active total, 59% are full-time employees, while 19.8% work part-time employees. A further 11.9% are self-employed and 6.2% are unemployed (and looking for work). The proportion of those in employment has fallen by 0.7% since 2001.

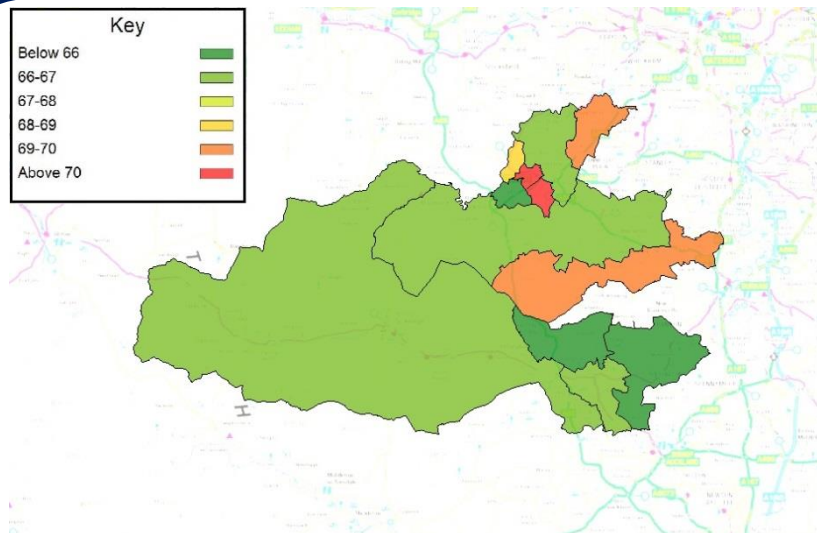


Figure 1: Economically Active by ward

Benefits and affordability



Nomis data showed that in June, there were 1,095 Universal Credit and Job Seekers Allowance claimants in the constituency, a rise from 1,080 at the same point in 2015. This represents 1.9% of people aged over 16 in the constituency with 25-34 year olds making up 24.2% of claimants.



Using these indicators, it would appear that the Government's aim of a lower welfare country is not being achieved. Furthermore, annual survey of hours and earnings data shows that hourly pay for full-time workers fell between 2014 to 2015 from £12.25 to £11.61 – failing to deliver on the higher wage 'settlement'.



Notwithstanding the fall in full-time hourly earnings, Ministry of Justice figures show that total housing possession claims (-23.3%) fell but that actual possessions grew (56.8%) in the first quarter of 2016 compared to the same period of 2015 in the local authority area.



The greatest fall was seen in social landlord possessions (-26.2%). Mortgage claims (-23.1%) are also showing a downward trend but there was no change in private landlord possessions (27) as Figure 2 shows.



The data also shows a significant increase in social landlord possessions (45%) and mortgage possessions (38.2%) over this period. Private landlord possessions grew from none in the first quarter of 2015 to 11 in the first quarter of this year.

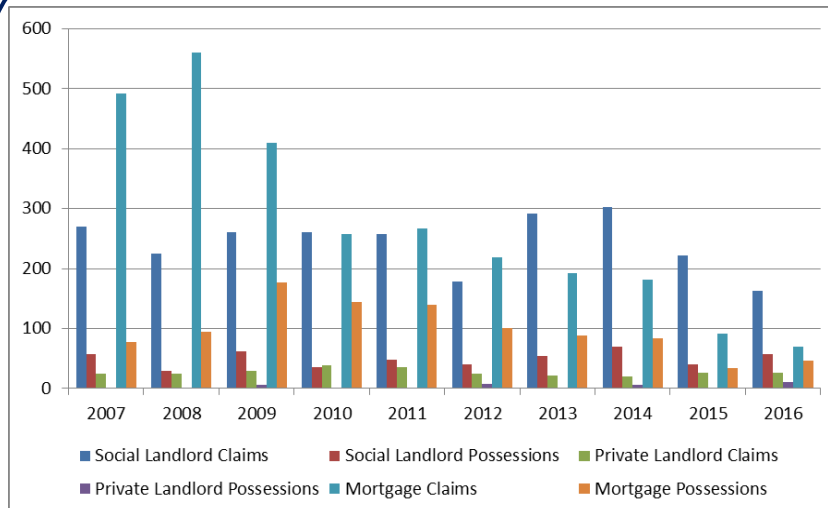


Figure 2: Possession claims and possessions

If you have any queries regarding the content of the APPG briefings, please contact:
Barry Turnbull, Policy Services Officer, 0191 5661030 or barry.turnbull@northern-consortium.org.uk