

Penrith and the Border Parliamentary Constituency

This is the first bulletin of 2016 produced by Northern Housing Consortium (NHC) providing analysis of housing-related data for the Parliamentary Constituencies in the North of England. The report provides analysis of the impacts of welfare reform and the housing market in the constituency.

We have used the following symbols to indicate your performance against the relevant regional or national statistics.



Above average



Reference point



Below average

Economic Activity



Neighbourhood Statistics shows that there are 60,270 residents in Penrith and the Border aged between 16 and 74. Of these, 72.9% are economically active (this includes unemployed and actively looking for work) which compares to 69.7% in Cumbria and 67.8% for the region as a whole.



The latest economically active figures are an increase on those from the 2001 Census. In 2001, there were 69.7% of residents aged 16 to 74 classed as economically active. This coincides with an increase in the number of people aged 16 to 74.



Figure 1 below shows economically active are concentrated in Penrith West (81.5%) and Skelton (76.1%) wards having highest proportions of economically active 16 to 74 year olds.



Of the economically active total, 48.6% are full-time employees, while 21.9% work part-time employees. A further 22.8% are self-employed and 3.1% are unemployed (and looking for work). The proportion of those in employment has fallen by 0.6% since 2001.

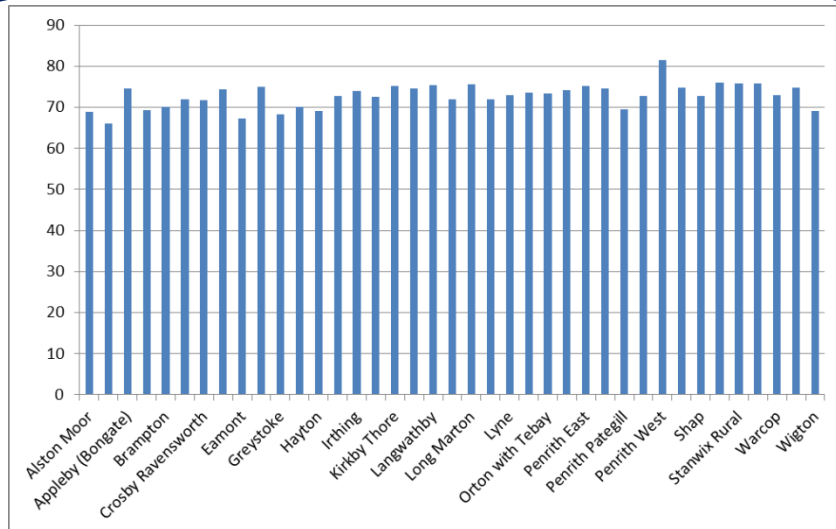


Figure 1: Economically Active by ward

Benefits and affordability



Nomis data showed that in June, there were 360 Universal Credit and Job Seekers Allowance claimants in the constituency, a rise from 325 at the same point in 2015. This represents 0.7% of people aged over 16 in the constituency with 25-34 year olds making up 15.8% of claimants.



Using these indicators, it would appear that the Government's aim of a lower welfare country is not being achieved. However, annual survey of hours and earnings data shows that hourly pay for full-time workers grew between 2014 to 2015 from £10.91 to £11.02 – delivering on the higher wage 'settlement'.



Notwithstanding the rise in full-time hourly earnings, Ministry of Justice figures show that total housing possession claims grew by 28.6% in the first quarter of 2016 compared to the same period of 2015 in the local authority area although there were no possessions over this period.



As Figure 2 shows social landlord claims accounted for the total rise in possession claims (28.6%).



There were no other type of possession action in any other tenure from 2015 Q1 and 2016 Q1.

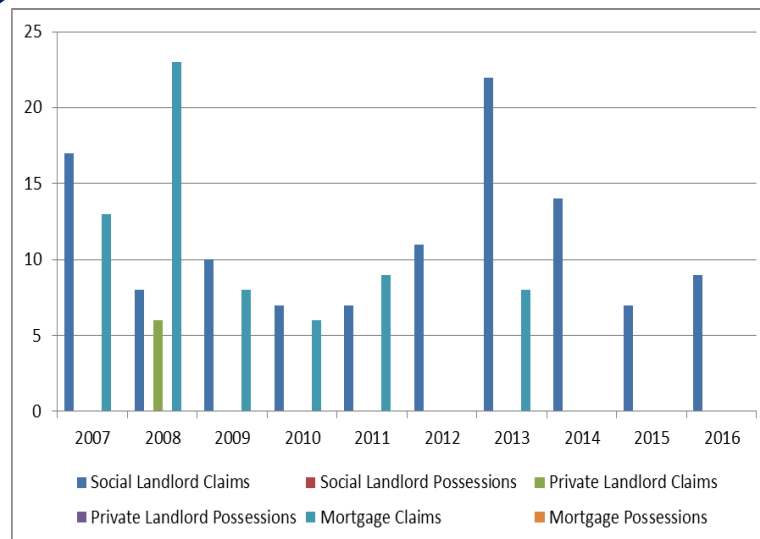


Figure 2: Possession claims and possessions

If you have any queries regarding the content of the APPG briefings, please contact:
 Barry Turnbull, Policy Services Officer, 0191 5661030 or barry.turnbull@northern-consortium.org.uk