

## Easington Parliamentary Constituency

This is the second bulletin of 2017 produced by Northern Housing Consortium (NHC) providing analysis of housing-related data for the Parliamentary Constituencies in the North of England. The report provides analysis of the impacts of welfare reform and the housing market in the constituency.

We have used the following symbols to indicate your performance against the relevant regional or national statistics.



Above average



Reference point



Below average

### Health Issues



Falls are a significant cause of emergency hospital admissions for older people and are a major factor in people moving into nursing homes or residential care. There is a clear deprivation gradient in the rate of hospital admissions for falls, with the rate for the most deprived decile being 1.6 times that of the least deprived decile.



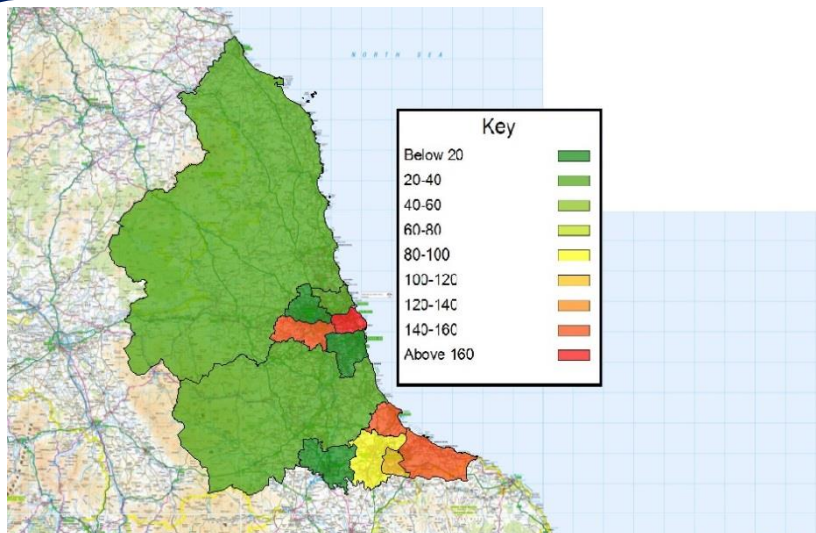
Hospital Episode Statistics shows that in 2015/16 there were 2,170 emergency hospital admissions due to falls of over 65 year olds in County Durham. This equates to 2,239 per 10,000 population which compares to an average of 2,215 in the North East.



Although the NHS is responsible for most “bed blocking”, the number attributable to social care has been increasing. In County Durham, 2 days per 1,000 people aged 18+ between April 2016 and January 2017 was due to social care issues (10 in the North East). This increases to 21 days for over 75s only (87 regionally). County Durham received over £25m in the additional adult social care funding.



Data produced by NHS Digital shows that between October 2015 and September 2016, there were 660 emergency readmissions to hospital in the County Durham and Darlington NHS Foundation Trust – a crude rate of 7.2. This is a decrease from 7.3 in the same period of 2013/14.



**Figure 1: Bed blocking for over 75s in the region**

## Universal Credit



In response to concerns raised by Northern Housing Consortium (NHC) members about the impact Universal Credit was having on their customers and the landlords, NHC embarked on a longitudinal research project to monitor these impacts over the course of the year April 2016 to March 2017. Reports were published at each stage of the project and these can be found at <https://www.northern-consortium.org.uk/services/policy/welfare/>



The full Universal Credit service was rolled out to Peterlee and Seaham JobCentres in October 2017 and at October 2017, there were 1,099 people claiming the new benefit in the constituency. This is an increase from 1,096 in September and compares to a County Durham average of 821.



Amongst NHC's findings was that people working variable hours such as zero hour contracts, part-time etc. were struggling to keep track of what Universal Credit they were being paid and as such struggled to pay their housing costs. DWP figures show an increasing number in the constituency (382) are in employment and claiming UC.



As the infographic below shows, NHC found that rent arrears are increasing and DWP figures show that most households in the constituency are entitled to the housing element of UC (342). Of these, most live in social accommodation (52.3% compared to 47.7% in private accommodation).



### The Universal Credit Impact Report

Based upon respondents from 38 organisations representing a total of 628,373 households and 10,965 Universal Credit claimants from across the North

#### Impact on the tenant

**78%** of respondents to our Universal Credit Impact Report survey (Round 4) experienced delays in processing claims. This fell from 84.2% in our Round 1 report.

**92%** of tenants on variable hours reported finding it difficult to keep track of how much they are being paid. As a result 94.7% said tenants were having difficulty meeting housing costs.

Members aware of tenants with health issues, including stress, depression and anxiety, increased from **two-fifths** to **over half** over the course of the project.

All respondents said that they were aware of tenants turning to foodbanks to feed their families.

#### Impact on the landlord

The percentage of respondents reporting evictions due to rent arrears increased since the rollout of UC to

**27%**

**41%** said tenants terminated their own tenancy as a result of UC. Some respondents said these tenants were sofa surfing or living with family.

The average amount of arrears per responding organisation is

**£180,000**

Average tenant arrears: **£427**

**91.7%** said staff were spending more time supporting people through UC than HB   
**36.1%** of landlords had introduced credit checks before letting units to new tenants

#### DWP Experience

**89%** said that there had been communication problems between tenants/orgs and DWP

Over the year, average UC claim processing times increased from **27.8** working days to **41.5** working days (+49%).

**75%** of respondents said they received different answers to the same question from different DWP sources.

Figure 2: NHC Universal Credit findings

If you have any queries regarding the content of the APPG briefings, please contact:  
Barry Turnbull, Business Intelligence Officer, 0191 5661030 or [barry.turnbull@northern-consortium.org.uk](mailto:barry.turnbull@northern-consortium.org.uk)