

## Middlesbrough and South East Cleveland Parliamentary Constituency

This is the second bulletin of 2017 produced by Northern Housing Consortium (NHC) providing analysis of housing-related data for the Parliamentary Constituencies in the North of England. The report provides analysis of the impacts of welfare reform and the housing market in the constituency.

We have used the following symbols to indicate your performance against the relevant regional or national statistics.



Above average



Reference point



Below average

### Health Issues



Falls are a significant cause of emergency hospital admissions for older people and are a major factor in people moving into nursing homes or residential care. There is a clear deprivation gradient in the rate of hospital admissions for falls, with the rate for the most deprived decile being 1.6 times that of the least deprived decile.



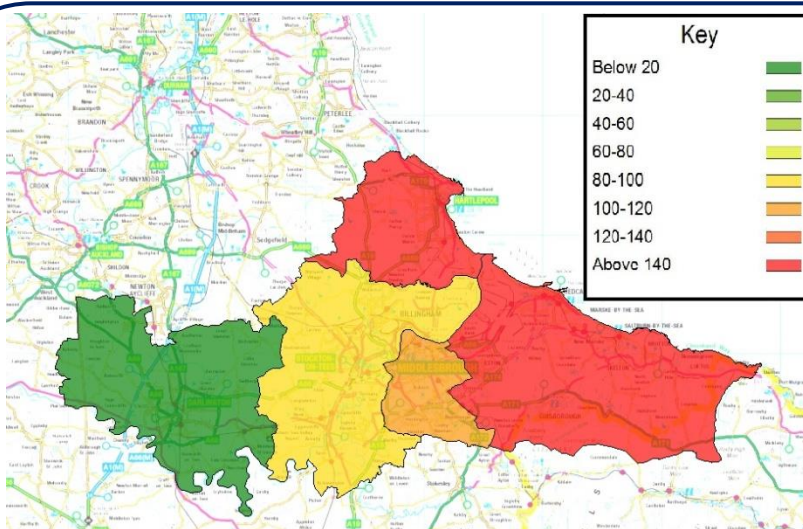
Hospital Episode Statistics shows that in 2015/16 there were 498 emergency hospital admissions due to falls of over 65 year olds in Redcar & Cleveland. This equates to 1,774 per 10,000 population which compares to an average of 1,686 in Tees Valley and 2,215 in the North East.



Although the NHS is responsible for most "bed blocking", the number attributable to social care has been increasing. In Redcar & Cleveland, 18 days per 1,000 people aged 18+ between April 2016 and January 2017 were due to social care issues (11 in Tees Valley). This increases to 153 days for over 75s only (104 in Tees Valley). Redcar & Cleveland received over £6m in the additional adult social care funding.



Data produced by NHS Digital shows that between October 2015 and September 2016, there were 576 emergency readmissions to hospital South Tees NHS Foundation Trust – a crude rate of 7.0. This is an increase in rate from 6.7 in the same period of 2013/14.



**Figure 1: Bed blocking for over 75s in the sub-region**

## Universal Credit



In response to concerns raised by Northern Housing Consortium (NHC) members about the impact Universal Credit was having on their customers and the landlords, NHC embarked on a longitudinal research project to monitor these impacts over the course of the year April 2016 to March 2017. Reports were published at each stage of the project and these can be found at <https://www.northern-consortium.org.uk/services/policy/welfare/>

The full Universal Credit service will be rolled out to the Redcar & Cleveland JobCentres in November 2018 and at October 2017, there were 894 people claiming the new benefit in the constituency. This is a decrease from 899 in September and compares to a Tees Valley average of 1,718.

Amongst NHC's findings was that people working variable hours such as zero hour contracts, part-time etc. were struggling to keep track of what Universal Credit they were being paid and as such struggled to pay their housing costs. DWP figures show an increasing number in the constituency (355) are in employment and claiming UC.

As the infographic below shows, NHC found that rent arrears are increasing and DWP figures show that most households in the constituency are entitled to the housing element of UC (262). Of these, most live in private accommodation (51.9% compared to 48.1% in social accommodation).

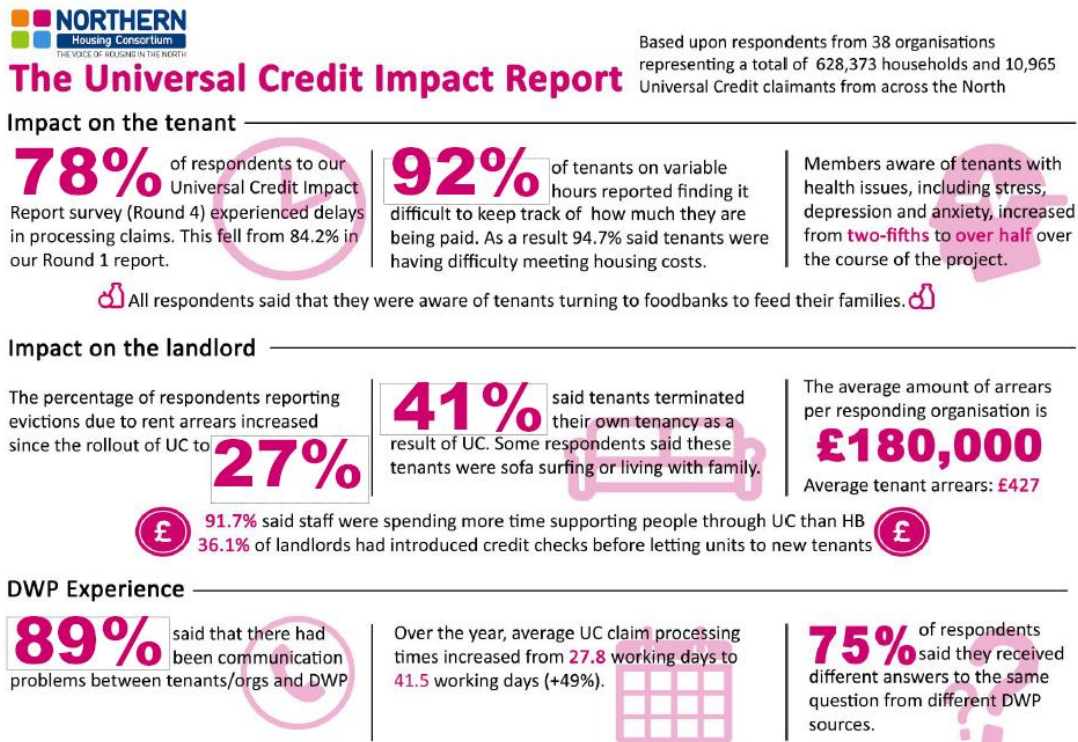


Figure 2: NHC Universal Credit findings

If you have any queries regarding the content of the APPG briefings, please contact:  
Barry Turnbull, Business Intelligence Officer, 0191 5661030 or [barry.turnbull@northern-consortium.org.uk](mailto:barry.turnbull@northern-consortium.org.uk)