

## South Ribble Parliamentary Constituency

This is the first bulletin of 2017 produced by Northern Housing Consortium (NHC) providing analysis of housing-related data for the Parliamentary Constituencies in the North of England. The report provides analysis of the impacts of welfare reform and the housing market in the constituency.

We have used the following symbols to indicate your performance against the relevant regional or national statistics.



Above average



Reference point



Below average

### Additional Social Care Funding



Mid-2015 population estimates by ONS showed the population of South Ribble to be 109,651. Figure 1 below shows how the population is broken down by age groups.



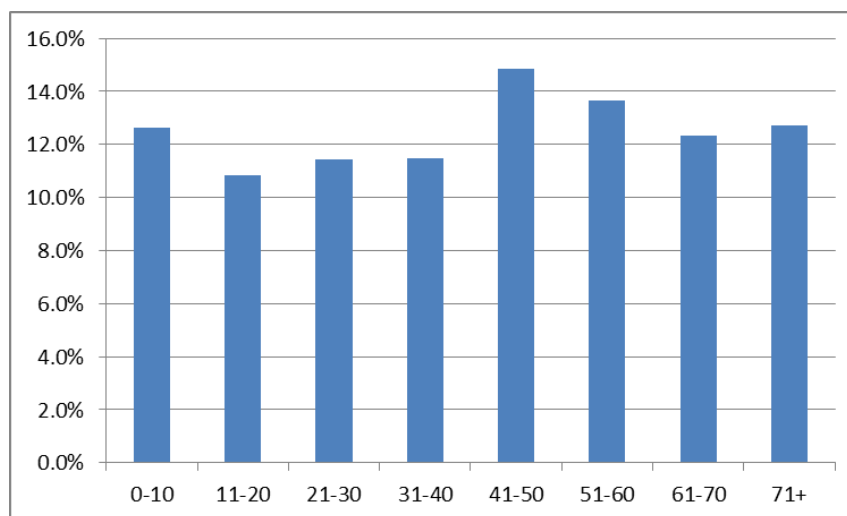
These mid-2015 population estimates shows that 23.5% of the population is aged 20 or below. However, there are a total of 15,168 people in the area aged 70 or over (13.8%). This compares with some 162,261 people aged over 70 in Lancashire.



In his Budget, the Chancellor announced a total of just over £2bn in funding for social care over the three years between 2017/18 and 2019/20. Lancashire's allocation of this additional funding totalled just under £48.5m over the three years (15.5% of the North West allocation).



Comparing these funding and over-70s estimates in Lancashire, it can be calculated that the 2017/18 allocation equates to £153.37 for each person aged over 70. This falls to £96.98 in 2018/19 and £48.07 in 2019/20.



**Figure 1:** Percentage of population by age

## Housing Supply



The Communities and Local Government (CLG) Committee closed an inquiry on the dissolution of Parliament on 3<sup>rd</sup> May without a concluding report into whether the housing on offer in England for older people is sufficiently available and suitable for their needs.



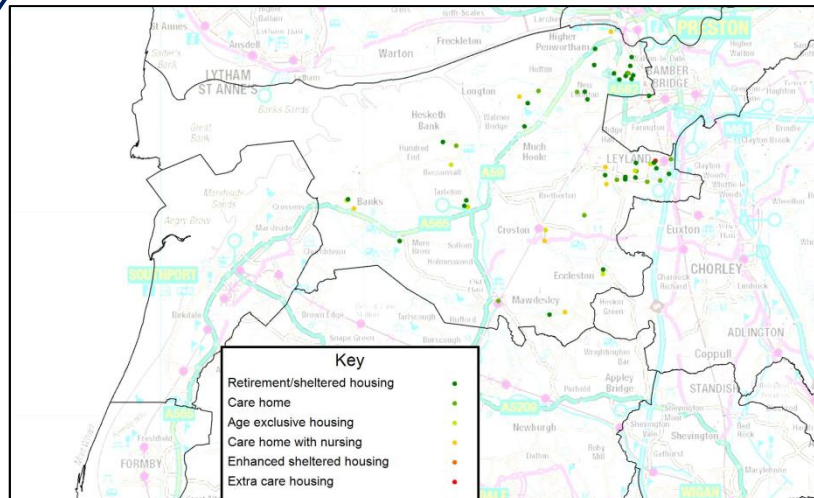
The inquiry followed research which indicated pensioners are stuck in oversized properties worth £820bn and was launched to a backdrop of significant housing shortages, rising numbers of older people, pressures on adult social care and with just 2% of the country's housing stock designed with pensioners in mind.



An examination of data held on housingcare.org website shows that there are 59 specialist accommodation schemes for older people in the constituency. Most common type of scheme was retirement/sheltered housing (53%) followed by care homes (20%).



Figure 2 below shows the location of the different specialist housing schemes for older people in the constituency.



**Figure 2: Location of Older Peoples Accommodation**

If you have any queries regarding the content of the APPG briefings, please contact:  
Barry Turnbull, Business Intelligence Officer, 0191 5661030 or [barry.turnbull@northern-consortium.org.uk](mailto:barry.turnbull@northern-consortium.org.uk)