

Colne Valley Parliamentary Constituency

This is the first bulletin of 2018 produced by Northern Housing Consortium (NHC) providing analysis of housing-related data for the Parliamentary Constituencies in the North of England. The report provides analysis of the housing make up and market and of deprivation in the constituency.

We have used the following symbols to indicate your performance against the relevant regional or national statistics.



Above average



Reference point



Below average

Housing Market and Stock Condition



As Figure 1 below shows, almost three-quarters of the housing stock in the constituency is in owner-occupation – above the regional average. Conversely, both the proportion of the social stock (9.6%) and the share of the private rented stock (15.5%) are lower than the average.



Latest figures show that there are 5,520 long-term empty homes in the local authority area and a further 871 classed as second homes in the district.



HSSA data for 2016/17 states that there were 180 private rented properties found to have one or more category 1 hazards. In that financial year no private rented properties were improved with loans or grants provided by the local authority.



In the second quarter of 2017, median house prices in the constituency stood at £152,750. With median annual salaries at £29,120, the median affordability ratio is 5.2 in the constituency compared to a regional ratio of 5.9.

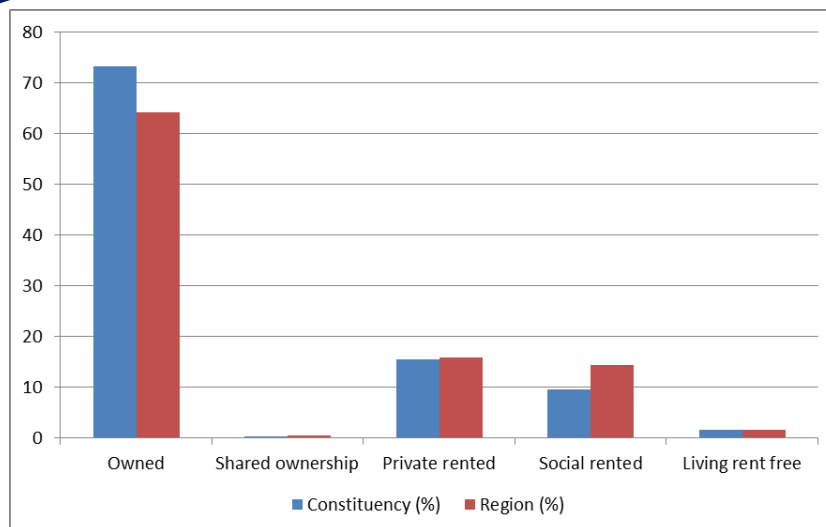


Figure 1: Housing Tenure in constituency

Deprivation



The English Indices of Deprivation measure relative levels of deprivation in 32,844 small areas or neighbourhoods, called Lower Super Output Areas (LSOAs), in England. Every such neighbourhood in England is ranked according to its level of deprivation relative to that of other areas (1 being most deprived).



As Figure 2 below shows, the constituency has some of the least deprived neighbourhoods in the country with some ranked above 31,000 but there are large areas (in red) particularly in areas covered by Crosland Moor and Netherton ward which have a relatively high deprivation ranking.



The Employment Deprivation Domain of IMD is a measure of those involuntarily excluded from the labour market. ONS figures show that the number of VAT/PAYE registered companies in the constituency has increased since 2010 from 3,195 to 3,980 in 2017.

However, monthly Job Seekers Allowance and Universal Credit figures show claimant figures in the constituency increasing. In March 2018 there were 1,330 claimants of these benefits (2.4% of those aged 16 to 64). This is an increase from 2.1% in August 2017.

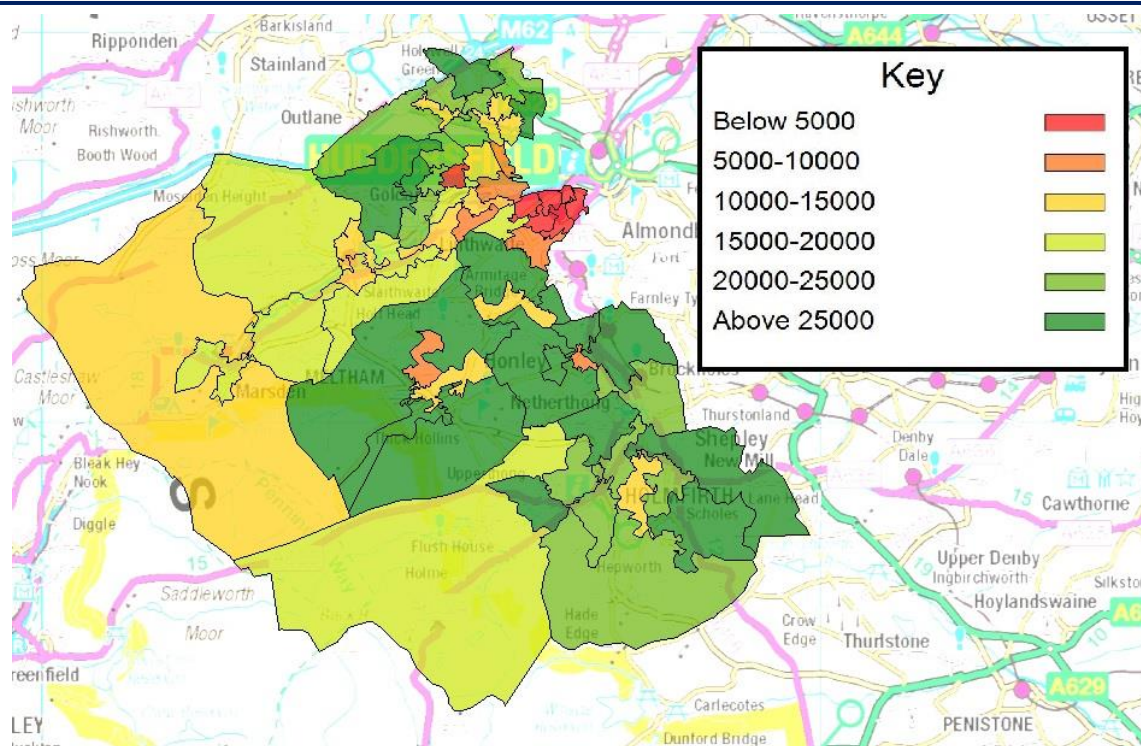


Figure 2: Indices of Multiple Deprivation Rankings

**If you have any queries regarding the content of the APPG briefings, please contact:
Barry Turnbull, Business Intelligence Officer, 0191 5661030 or barry.turnbull@northern-consortium.org.uk**