

The value of a local, integrated approach to improving homes and lives in the Northern regions

Liz Messenger, Head of Public Health (Older People)



Why is it important?



Making Leeds the
best city to grow old in

- A third of people in Leeds are 50+ with **1 in 5 living and ageing in the 10% most deprived areas of the City.**
- Levels of falls in people over 65 are higher than national/regional average – **link with falls hazards in the home**
- Over 1/10 people experience fuel poverty with around 470 excess winter deaths each year – **an impact of cold and damp homes**
- The majority of Leeds dwellings (60.2%) were built before 1965, which has **implications for decency standards and need for retrofit**
- Most people approaching and in later life want to stay and continue living in their own – **accessible homes and age friendly designs will be key.**
- **People do not consider housing options until they reach crisis point**



Our approach



Making Leeds the
best city to grow old in

Me and My Home - Older People's Housing Strategy priorities

- Information and advice - 'I know what my options are and where to go for information'
- Living independently - 'I have the support I need to live independently and well in my own home'
- Specialist housing with support - 'When I need it, I have the option to move to a home with extra support'
- New housing developments - 'I know that when new houses are built my needs are considered/my voice is heard'.

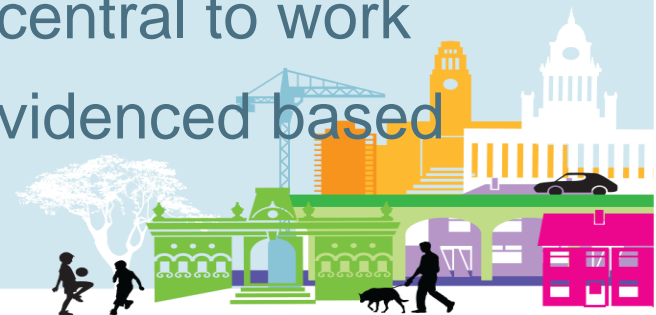


Value/Gains



Making Leeds the
best city to grow old in

- Raised the profile of:
 - Older people's housing needs across the city
 - Impact of housing on health
- Developed strong partnerships
- Brings together strategic ambitions within the city
- Ensures the voice of older people is central to work
- Tackling inequalities - data led and evidenced based
- Brought about innovation



Impact

Mrs K contacted Home Plus (Leeds) following a recent fall on the stairs. The 2 staircases in her home lacked additional stair rails, the house was very cold, with plaster peeling off the walls. During her long stay in hospital following the fall, a leak had developed from the bath onto the ceiling below.

- Stair rails were installed and grab rails at the front door
- The Home Plus hazard repairs service were able to repair the seal around the bath to prevent further damage to the ceiling
- The Support Worker arranged for a heating engineer to convert it into a single system to heat the whole house simultaneously
- Draught proofing and radiator reflector panels to conserve heat.
- They also discussed with her the option to change energy providers to reduce her bills.
- The smoke alarms were found to be faulty, so Home Plus was able to fast-track a referral to the Fire Service for replacement smoke alarms.



Thank You

Elizabeth.messenger@leeds.gov.uk

