

Improving homes and lives in northern communities




Sarah Robson

Director of Development and Regeneration
Karbon Homes

About us

At Karbon we build, manage and look after affordable homes for people across the North. And then we go further, we give them the strong foundations they need to crack on with life.

Our three strategic aims:

-  **To provide as many good quality homes as we can**
-  **To deliver excellent service to our customers**
-  **To shape strong, sustainable places for our communities**

Our footprint covers the North East of England and Yorkshire, with almost 30,000 homes across diverse communities.

Our ambitions

- Our mission is to provide people with a strong foundation for life
- A good quality home is essential
- Many of the areas we work in lack enough good quality homes
 - We're building c. 500 new good quality affordable homes every year
- We're also investing in our existing homes to meet the decarbonisation challenge
- We're undertaking in-depth work in key areas to shape strong sustainable places for our communities



Decarbonisation challenge

Meeting net zero by 2050



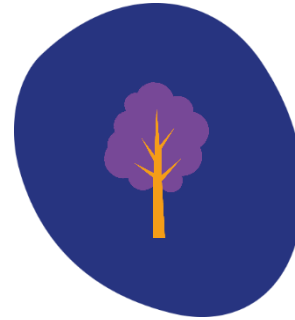
The scale

We need to invest £500m in our existing homes (approx. £18k per home) to meet net zero by 2050



Remodelling and improvements

Some homes will only require small changes to improve energy efficiency & we are trying to build energy efficient homes now



Major investment in green tech

Other homes will need bigger investment including the installation of air source heat pumps and other heating systems



Need Government support

To get to net zero at speed and scale, we need upfront support through the Social Housing Decarbonisation Fund

What net zero brings for customers and our local communities

- A greener, more sustainable way of living
- Energy savings – could lead to up to £400 a year savings on average fuel bills and £250 on average heating bills
- New skills and jobs – investment on a massive scale will bring new jobs to the areas we work in



Shaping strong, sustainable communities

In many areas we work in, we are a community anchor.

Where need is greatest, and where we have a large number of homes:

- we'll work with local partners and the community to make place-based improvements
- sometimes that will be physical regeneration of our homes.
- elsewhere, it will be additional support that we provide including employment and financial inclusion



Any questions?