



**Bolton**  
at **Home**

**karbon**  
homes

# LEVELLING UP CONFERENCE

---

## HOUSING AT THE HEART OF A REBALANCED COUNTRY

14th July 2022 | 9:30 AM – 3:45 PM | Hilton – Leeds City

***WORKSHOP 1:  
LOCAL PRIDE & BELONGING – REGENERATING  
NEIGHBOURHOODS TO RESTORE COMMUNITY VIBRANCY***

# Levelling Up Conference 14<sup>th</sup> July 2022

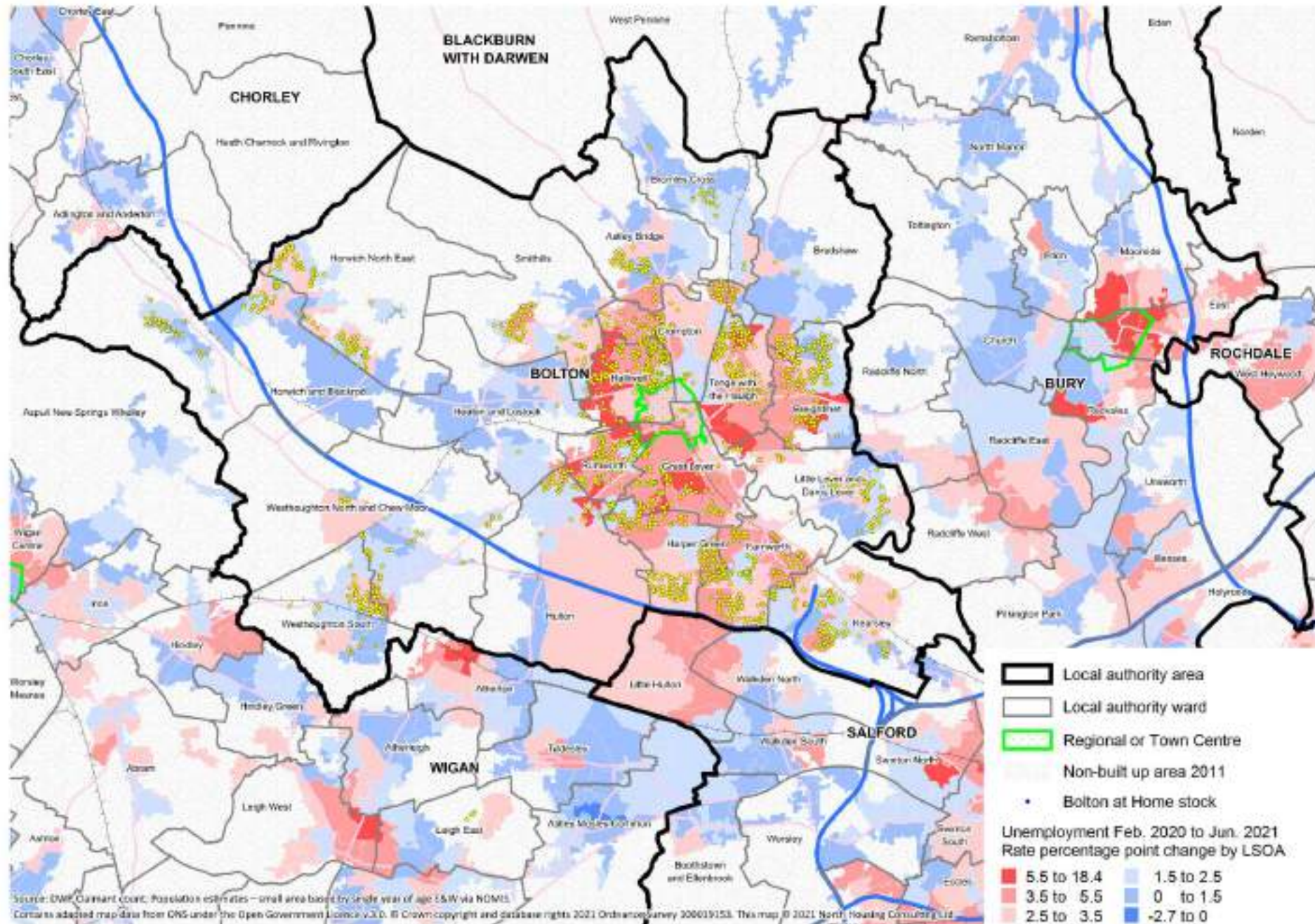
Workshop 2

Local Pride & Belonging –  
Regenerating Neighbourhoods  
To Support Communities

The Bolton Experience

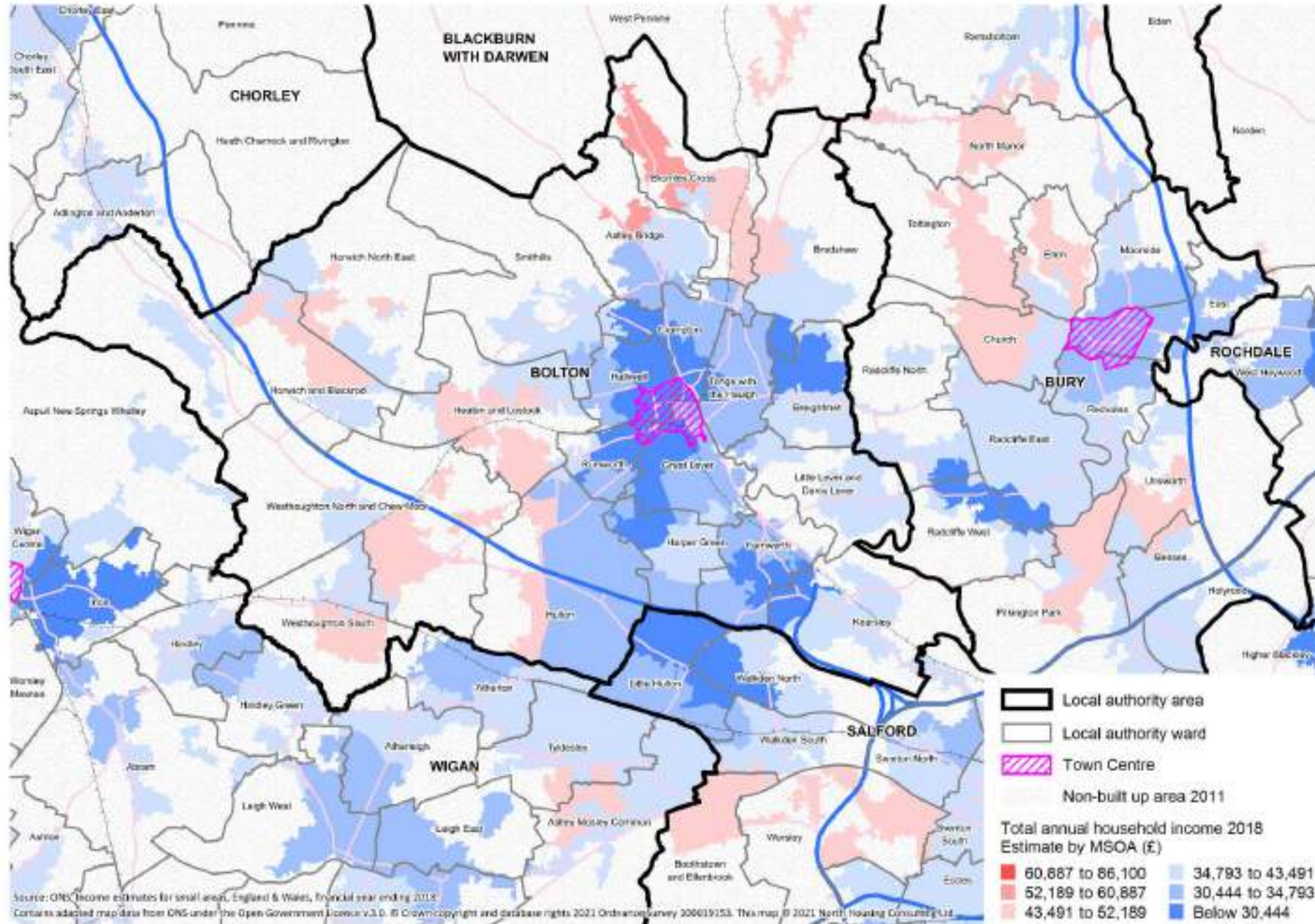
**Bolton**  
at **Home**

# Changing Unemployment February 2020 to June 2021



# Total annual household income 2018

New





Overdevelopment of housing and minimal outside space as illustrated by washing line



Adjacent BH Radburn estate – poor design leading to crime and safety concerns/poor quality housing

# Community Investment

**Community events and projects targeting, social isolation, anti poverty, developing skills and training and accessing sports and arts/culture locally.**

5,213 individuals participated in our regular groups and projects, benefitting from regular interaction / support / engagement.

Supported 948 volunteers in our communities to support the delivery of

22 community growing sites and outdoor spaces

Running 12 community buildings

Running 92 groups, over 100 projects and activities based on and around school holidays and holiday hunger initiatives.

Supporting individuals within our communities to link and develop their own local support network.



# Communities – Congolese women's project and Halliwell Family day arts project.



# Employment Support

## UCAN Centre's

- 314 people received employment support
- 220 people got a job
- 88 people attended accredited training
- 85 people attended unaccredited training
- 17 people were supported into volunteering

## Working Wardrobe

- 102 people accessed the service
- 62 people into work (figures are included in the overall 2020)

- 

## Kickstart

- 23 roles created
- 88% are in further employment 5 are employed directly by our organisations (Bolton at Home and Arcon

# Working Wardrobe



# Employment

## Peer Navigators Role

To forge links between public sector, community sector and individuals

To promote behaviour change, self care and community cohesion

To improve access to voluntary and community sector provision

To support local community action – both existing and new

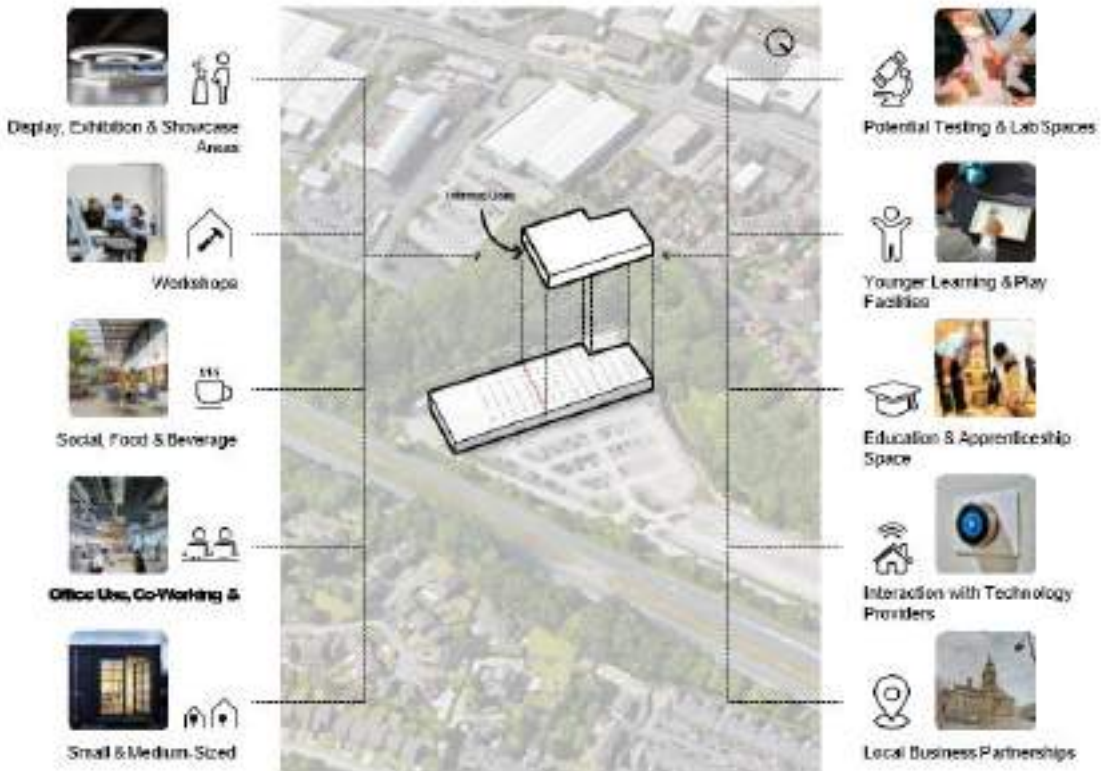
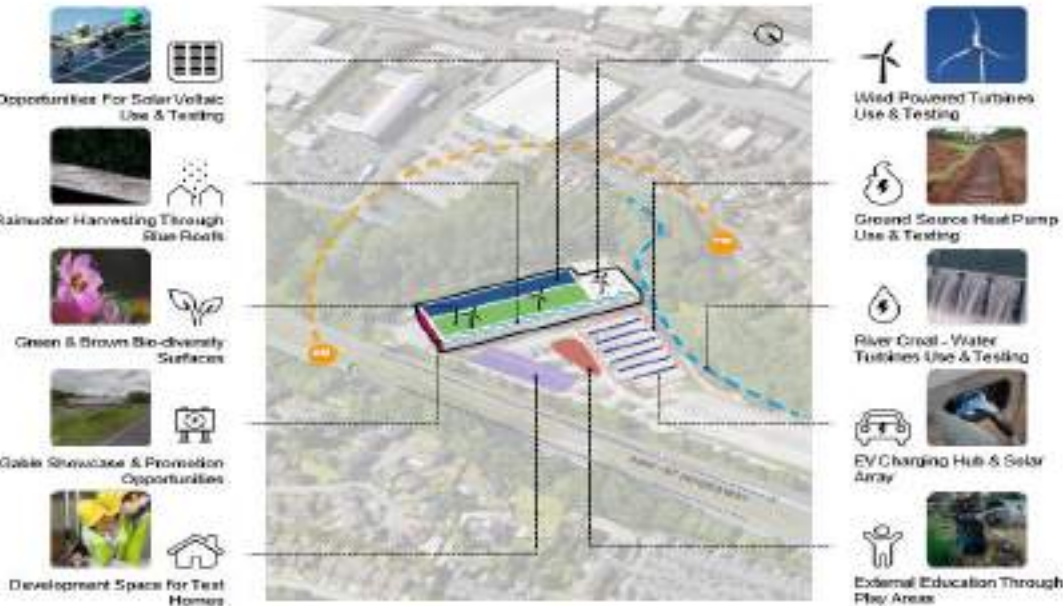
To be a voice for the local community

- **Peer Navigators are** Recruited from local community to work within their neighbourhood to support people to access services, create networks and build local resilience.
- 16 people recruited into paid employment through the PN programme in 2021.
- 3 PNs left to go onto permanent employment this year
- 1 PN left to go into full time education this year.

# Peer navigators



# Greenworks



# Celebrate!



**Bolton**  
at **Home**

# In summary our approach is:



Listening to customers and communities



Community Investment strategy and resources



Partnership working



Evidence backed decision making



Celebrate success!



***WORKSHOP 2:  
PAY, JOBS, AND LIVING STANDARDS – HOUSING  
PROVIDERS AND EMPLOYABILITY***

Getting people into  
employment/ into  
better paid jobs is only  
the first step

---

Julie Froud + Karel Williams:  
Foundational Economy Research Limited

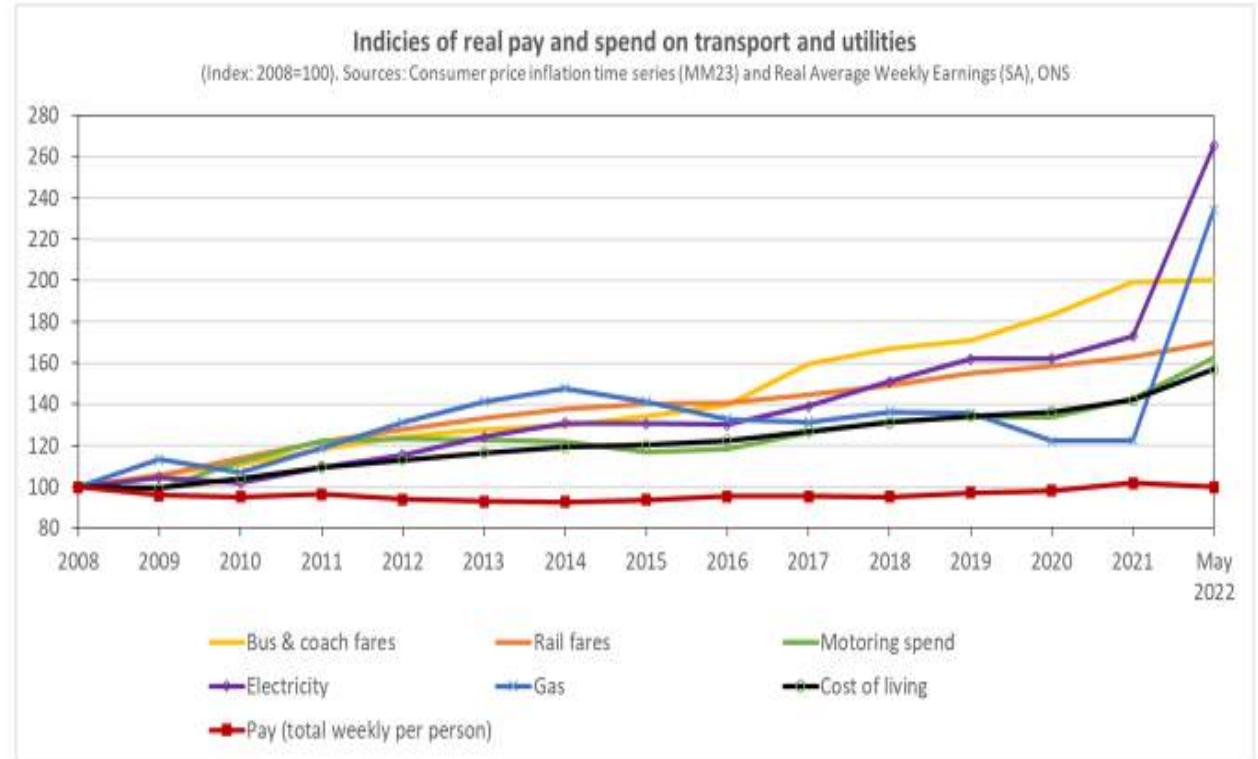
# The low income trap for the low paid under Universal Credit

- UC brochure claim is true, claimants are 30-60% better off in work, because benefits are very low.
- This means liveability problems for the 25% plus of claimants who have “no work requirement”
- What the UC brochure does not explain is that low paid workers retain very little of the higher pay from more hours or higher pay, after taxes (35p per £) and adjustments to benefits (UC taper at 55p)
- Average low income households in a poor NE district with gross income of £25-35k (with two earners) have an effective marginal tax rate of more than 80p on every pound of extra income
- Low pay is increasingly a problem of (lack of) hours (25%) as much as hourly wage (14%)



# Plus a cost of living crisis about essentials

- We are now in the middle of an acute cost of living crisis about the price of essentials like petrol, food and utility bills; energy price cap in autumn will go above £3k which is near 1/3<sup>rd</sup> of the state pension.
- The acute crisis is unmanageable for low income groups because it comes on top of chronic problems about rising cost of transport and utilities over the decade of the 2010s, where real pay is flat.
- By 2019, in the bottom two deciles of households by income, 20-35% of total household spend went on food and utilities.
- Heating vs eating crisis now reaching middle income groups above the 'low paid'



# Gendered distribution of employment opportunity

- If we look at couples with children, in 75% of households both parents work but work opportunities are gendered.
- Because employment has costs in terms of child care and transport to work e/g , running a 10 year old Focus or Astra cost about £2,500 - £3,000 a year in 2021; the rising cost of petrol and diesel has added an extra £500 by mid 2022
- The low income household can only afford one car which mostly the man takes to full time work while the woman walks to work or takes a short bus ride in the proximity labour market
- In Newcastle women account for 79% of part time workers and 76% of those part time workers travelling less than 5km to work are women



## RSLs have agency to address liveability (in alliance with other anchors)

You tell us what you are doing/ can do and how you can work with other organisations to support low income households, beyond the minimum or living wage

Some suggestions:

- ✓ Annualised hours ie weekly hours vary but wage stays the same to underpin household budgeting
- ✓ “Grow your own” workforce development, for older candidates with fewer certificates
- ✓ Subsidised transport at the right times to get to key employer locations like retail parks and industrial sites
- ✓ Support for childcare outside school hours e.g holiday and after school clubs
- ✓ Addressing food poverty with more than food banks; helping tenants in fuel poverty with provision of community warm spaces



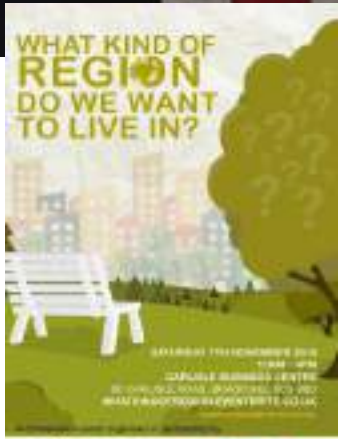
## ***EMPOWERING COMMUNITIES – WORKING WITH CITIZENS TO IMPROVE LOCAL AGENCY***

**Chair:** Naz Parkar, Director of Homes and Neighbourhoods, Kirklees Metropolitan Council

- Jessie Joe Jacobs, Coordinator of the Democracy Network, Involve

- Andrew Wilson, Co-Director, Same Skies Think Tank

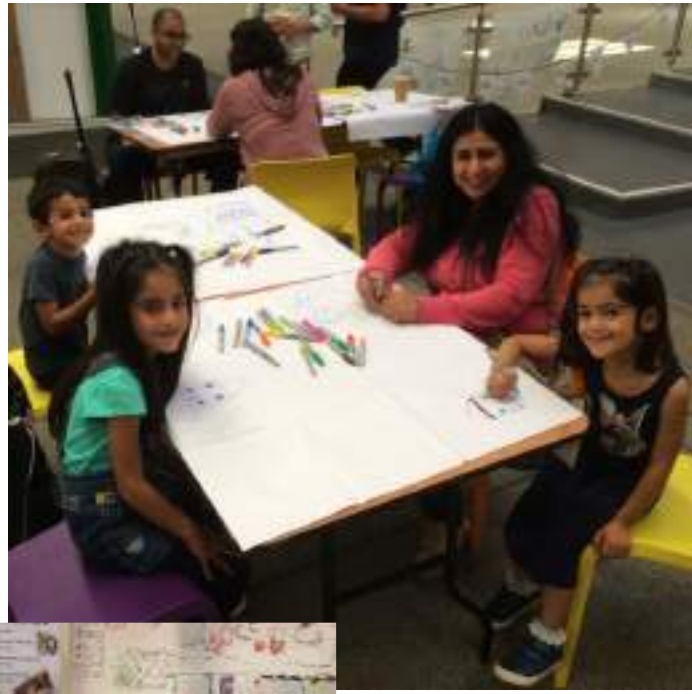
- *Claude Hendrickson, Campaigns, We're Right Here: The Campaign for Community Power*







1. Share ideas and activities between people and places in West Yorkshire for our common good.
2. Influence local and regional politics and civic institutions in West Yorkshire.
3. Generate discussion about the relationship between people and places in West Yorkshire and England's national government and institutions in the most centralised established democracy in the world.



**WeShareTheSameSkies** @SameSkiesBlog Follow

Lua & Tom love living in Northowram - the school & countryside make it a great place to grow up #RegionalDemocracy



3:58 am - 18 Aug 2018

2 Retweets 1 Like

**WeShareTheSameSkies** @SameSkiesBlog Follow

Rabina in her shop Darren's Bookshop, in @HuddsMarkets, she's drawing #Newsome, and she loves the village feel of where she lives, where you can get everything you need @GrowingNewsome



5:21 am - 15 Aug 2018

2 Retweets 7 Likes

As well as being great at drawing, Lily likes going on bike rides with her grandad along cycle paths and canals, and the most she's done is 14 miles! @Transport4North @SustransYorks @IPPRNorth #regionaldemocracy



4:21 am - 15 Aug 2018

2 Retweets 7 Likes

**WeShareTheSameSkies** @SameSkiesBlog Follow

Asha Kauser is proud of living in West Yorkshire, especially for the diversity of the people & the beautiful countryside nearby #RegionalDemocracy



3:02 am - 2 Aug 2018

1 Retweet 5 Likes

**WeShareTheSameSkies** @SameSkiesBlog Follow

Olivia & Maisie live in Methley & love having a canal nearby. But there aren't enough school places in the village so Mum & Dad have to drive them to Rothwell & back every day #RegionalDemocracy



4:22 am - 21 Aug 2018

2 Retweets 4 Likes

**WeShareTheSameSkies** @SameSkiesBlog · 2 Aug 2018

Elise & Brandon love living in Barnscliffe, especially having so many community facilities like Haslewood Hub nearby #RegionalDemocracy



4:22 am - 21 Aug 2018

2 Retweets 4 Likes





# AMPLify West Yorkshire an alternative manifesto process



If elected as Mayor, I'll commit to keeping one half day per month free to talk directly to grassroots organisations across West Yorkshire.

I'll publish afterwards which groups I have met.



"The word 'consultation' should be banned! It should be replaced with "Collaboration" involving the community from the start, as opposed to presenting worked up schemes too late in the planning process, then asking for responses, and wondering why people don't like a planned scheme!"

Paul Cartwright  
Pontefract Civic Society

Baildon, Batley, Birstall, Bradford, Burley in Wharfedale, Dewsbury, Guiseley, Hebden Bridge, Huddersfield, Hunslet, Ilkley, Keighley, Leeds, Morley, Otley, Pontefract, Shipley, Sowerby Bridge





Claude Hendrickson  
Neil McKenna





News > People

# Campaign launched to give Leeds residents a say on region's future

A campaign has been launched to give Leeds residents a say in the future of West Yorkshire.

By Joanna Wardill

Woods, 11th August 2021, 9:02 am

Telegraph & Argus

Subscribe

News Sport Business Opinion What's On Nostalgia Announcements e-Editions More

Bradford Kighley Airedale Valley Ilkley Yorkshire Crime UK Today Business Awards

## West Yorkshire canals to be used for freight transport, book suggests

5th August 2021



BY CHELSIE SEWELL  
DIGITAL REPORTER  
@jws160616

Share



1 Comments





30

SATURDAY, JULY 30, 2022 AT 11 AM - 1 PM

### Headingley to Chapeltown - West Yorkshire Walk

Sainsbury's Headingley Arndale

Insights



11

TUESDAY, OCTOBER 11, 2022 AT 6 PM - 7:30 PM

### Community Building in Leeds - 3 West Yorkshire Walks films

Hyde Park Book Club

**Festival of Debate**  
1:30 - 3:00

- Can we create an economy that cares for both the human spirit and the planet?
- On 3 August, join a panel of experts to explore how we can create a better future for Yorkshire's children. [Same Skies Think Tank](#), [Citizen Network](#)
- Register now for free <https://www.ly/y385p7s>



What Kind of Economic Future Do We Want for Yorkshire's Children?  
Can we create an economy that cares for both the human spirit and our planet earth with well...

**Huddersfield Hub**  
Yesterday at 10:45 AM

Calls are growing for Kirklees Council to scrap demolition of the Piazza Centre and let it continue to develop as a thriving community arts venue



'Save the Piazza Centre and let the arts community lead the town's regeneration' - that's the call from Huddersfield Trades Council - Huddersfield...

“Levelling up” is  
a needs based  
approach.

3. Generate discussion about the relationship between people and places in West Yorkshire and England’s national government and institutions in the most centralised established democracy in the world.

What would an asset based levelling up process look like?

What is the difference between a resident and a citizen?

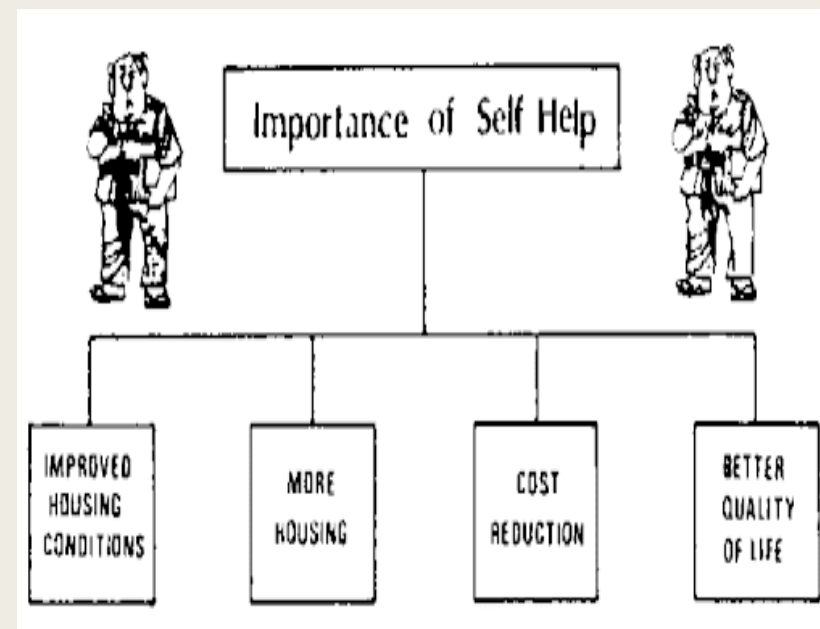
Is community-led housing a form of democratic participation?

WE'RE  
RIGHT  
HERE.

## The Campaign for Community Power

Claude Hendrickson

- Founder of Frontline Community Self Build
- Accredited Community Led Housing advisor
- Community Land trust Ambassador
- Equality, Diversity and Inclusion Associate  
With People Powered homes (Leeds Community Homes)
- Contributor to the Bacon review into Self build & Custom Build commissioned by Boris Johnson 2021





WE'RE  
RIGHT  
HERE.



*WE'RE RIGHT HERE*

IS CALLING FOR A COMMUNITY POWER ACT, A  
MAJOR PIECE OF LEGISLATION WHICH WOULD  
FUNDAMENTALLY CHANGE WHERE POWER LIES  
IN THIS COUNTRY



# This proposal has three parts: Establishing **3 new community rights**:



- **1 A Community Right to Buy**, giving communities the right of first refusal once important local buildings and spaces with significant community value come up for sale.
- **A Community Right to Shape Public Services**, significantly strengthening and expanding the scope of the existing Community Right to Challenge and encouraging greater collaboration between communities and public institutions when designing, commissioning and delivering local services.
- **A Community Right to Control Investment**, creating a mechanism through which a proportion of all public regeneration and local economic devolution funds allocated to a neighbourhood could be controlled and invested directly by a neighbourhood-level institution and giving communities the power to trigger “open book accounting processes”.

*These rights are designed to support and encourage local communities to take actions to shape the future of their neighbourhoods.*

## 2. Enabling Community Covenants –

neighbourhood level arrangements bringing local people, community organisations and local authorities together to share power and make decisions.

- **Local authorities might enter into a Community Covenant agreement** with either a single Covenant partner or with multiple partners. Covenant partners might include parish councils, neighbourhood forums, independent community anchor organisations and local alliances of community organisations, associations and informal and unconstituted groups. They would be required to demonstrate to the relevant council their intention and ability to work alongside and involve broader networks of community organisations and groups as well as local people in general – passing five tests of local accountability.
- **Having formed a Community Covenant, Covenant** partners would be able to draw down a range of powers from an agreed menu of options and would receive resources and capacity-building support to allow them to exercise these powers effectively.
- *Once a certain geographic share of the local authority area was ‘covered’ by Community Covenants, the government would be required to rapidly devolve substantial powers (including fiscal powers) and associated resources to the relevant local authority.*



### 3. Establishing a **Community Power Commissioner**



- an **independent office** charged with ensuring action is taken across government to uphold the new community rights, enable the formation of Community Covenants everywhere and generally unlock community power.
- To ensure they could carry out this function effectively, the Commissioner would have statutory power to:
- Conduct ad hoc reviews of the degree to which any government policy, practice or body is consistent with communities' rights and with the principle that communities should be able to exert significant control over the spaces, services and spending decisions which shape their places and futures.
- Require government departments and public bodies to provide any information which their office might require in order to conduct full and thorough reviews of this kind.
- Make binding recommendations to government departments and public bodies as to how they might more fully uphold communities' rights.



WE'RE  
RIGHT  
HERE.

# Community Power Act

- These three pillars of a Community Power Act are mutually complementary and reinforce each other.
  - The three new rights make it much easier for communities everywhere to shape their areas.
  - Community Covenants offer a convenient vehicle for communities to exercise these rights, while also triggering the devolution of extra powers down to the community level as well as to the relevant local authority.
  - the Community Power Commissioner would both drive the formation of Community Covenants and work to ensure that the government upholds communities' rights fully and effectively.
- **In summary**
  - The Community Power Act **is the missing piece of the devolution puzzle** – it will build a clear and trusted track along which power can be devolved from Whitehall to regions, local areas and all the way to the neighbourhood level.
  - There is already a large and growing movement of people around the country taking action in their communities. This Act would remove some of the institutional and legal barriers in their way. In addition, by changing the basic assumption about where power lies, it would help inspire others to take action so that ultimately every neighbourhood in the country is supported to take control of its future.

# Thank You Questions

claude@leedscommunityhomes.org.uk



Looking for answers?

We're Right Here.

[hello@right-here.org](mailto:hello@right-here.org)

[www.right-here.org/right\\_hereUK](http://www.right-here.org/right_hereUK)

The Campaign

for

Community Power

Supported by



# My Housing Journey

- Inspiration
- Observation
- Implementation
- promotion

- 



- Housing 60s-80s Dereliction in Areas  
Badly Maintained housing stock Local authority  
Postal discrimination



- 80s-90s onwards Different Housing Options  
**Housing associations,**(with the sweetener they would bring jobs and training to area) **Right to buy** council houses



# My Journey Community Led Housing



FRONTLINE self-builders  
seen here set up in 1988  
outside one of the 12 Self-  
Build homes

1994

[https://youtu.be/O63akqk  
Byxl](https://youtu.be/O63akqkByxl)



25 years On  
FRONTLINE's  
Self-Built homes  
Frontline close @  
Ravenscar Mount  
LS8

# Leeds Now has good History of CLH projects



**1989** Latch is set up to work on derelict empty properties with homeless volunteers creating their own housing.



founded in **1998** Canopy is a self-help, community housing project based in inner city Leeds which was. It renovates derelict and empty houses to create decent homes for

people that are homeless



**1992** GIPSIL was formed in 1992 as 'Gipton Supported Independent Living' by members of the local community who were concerned about the number of young people sofa-surfing on the estate.



**2006** LILAC began with a group of five Leeds residents, interested in the idea of building their own homes so they could live and bring up their children in a different way.



**2010** The people behind this project share a common belief in the power of community and a strong commitment to the Chapeltown/Harehills area of Leeds. It might not be everyone's idea of paradise, but this is where we belong and we want to see it flourishing.

**FRONTLINE's Self-Built homes**  
1994/6





# Community Self Build Agency

2000 CSBA was set up I was founder member

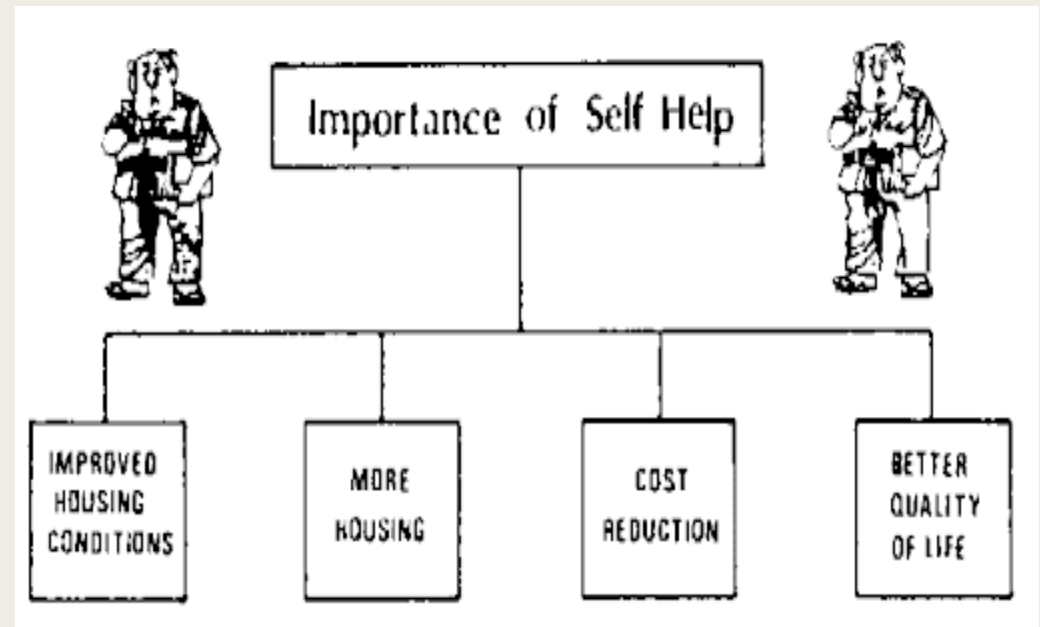
2010 Veterans Self build in Bristol

## Community Led Housing

- Custom Build,
- Self Build,
- Coop's
- UK Cohousing
- CLT,s

Have always existed in one form

Or another by available to a select set of people





**Bolton**  
at **Home**

**karbon**  
homes

**THANK YOU FOR  
ATTENDING**